



RASOFINE ADHESIVE 04

RASOFINE ADHESIVE 07

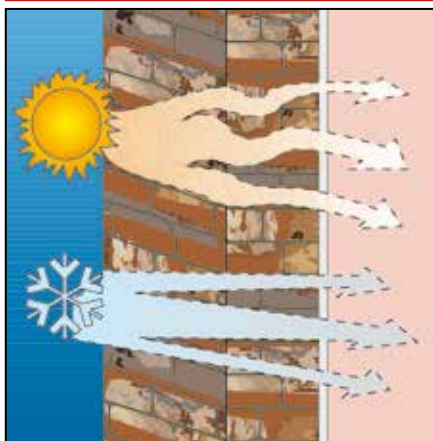
SKIMMING ADHESIVE FOR BONDING AND SKIMMING EXTERNAL WALL INSULATION SYSTEMS AND FOR SKIMMING CRACKS IN VARIOUS SURFACES

GRANTS *LEED* CREDITS

CHARACTERISTICS			ENVIRONMENTAL	METHOD OF USE					PRECAUTIONS
ONE-COMPONENT	WATER BASED	ALLOWS TO BREATHE	ECO GREEN	RECYCLABLE	MIX MECHANICALLY	APPLY BY TOOTHED SPATULA	APPLY BY TROWEL	APPLY BY INOX SPATULA	STORAGE: KEEP AWAY FROM FROST

PROBLEM

BONDING AND SKIMMING EXTERNAL WALL INSULATION PANELS



SOLUTION

The exterior wall insulation panels used on residential buildings need to be bonded securely so that they remain firmly in place over time. **RASOFINE ADHESIVE** is a skimming adhesive, consisting of Portland cement, special resins, selected aggregates and additives to improve its workability and adhesion.

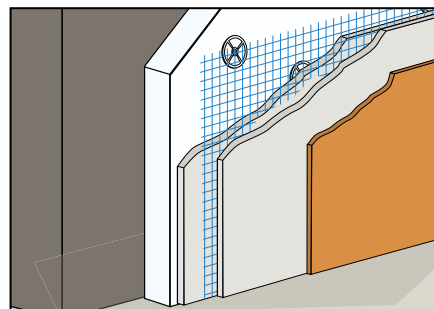


ADVANTAGES

- Easy-to-use one-component product.
- Secure adhesion.

APPLICATION FIELDS

RASOFINE ADHESIVE is a product used in the exterior wall insulation system with excellent adhesion to various surfaces such as concrete, cement-based mortar, brick etc. Ideal as a skimming layer over old plastic coatings, or on concrete surfaces with adhesion problems.



METHOD OF USE

• PREPARING THE SUBSTRATE

When applying over powdery plaster, it is always a good rule to apply a coat of PRIMER FIX first, to fix the powdery parts.

• PREPARING THE MIX

RASOFINE ADHESIVE should be mixed with approximately 26% clean water (roughly 6.5 litres per bag), using a mechanical low-speed stirrer, to obtain a smooth and lump-free paste (1). The mix remains workable for roughly 3-4 hours, depending on the weather conditions.

• APPLICATION

RASOFINE ADHESIVE skimming adhesive is used to bond panels made of expanded and extruded polystyrene, polyurethane, wood fibre, fibreglass, mineral fibre and cork. The product is

spread using a toothed trowel or it is applied in dabs (spot-bonding), also making sure to spread it around the perimeter of the panel to improve stability (2). The panels will subsequently be placed and gently pressed against the wall (3). Always start applying the product uniformly from the bottom upwards, making horizontal layers of panels. After at least 24 hours, **RASOFINE ADHESIVE** will be used as a skimming layer over the insulation panels, sinking RETINVETRO PER RASANTI fibreglass reinforcement into the first skimming coat (4) (the mesh should be pressed using a float against the fresh layer of **RASOFINE ADHESIVE** mix and overlapped at the joints by at least 10 cm). Do not use the product on panels that have a "skin" because it will

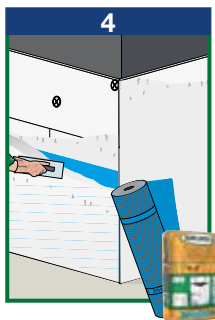
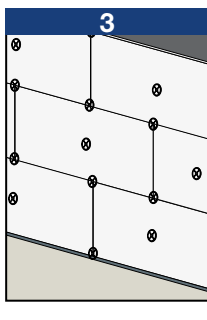
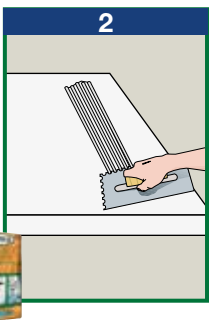
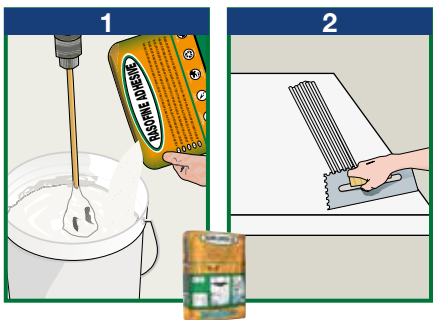
not bond to them. The panels should be fixed further using plastic nails with flat mushroom heads.

• CONSUMPTION

Used as an adhesive: 4-6 kg/m²; as a skimming coat: 2-3 kg/m².

• PRECAUTIONS

- Use cold water in summer and water at 20°C in winter.
- Application temperature from +5°C to +35°C.
- Do not add water once the mix has started to set.
- Do not add any other materials such as cement, aggregates and additives.
- In hot weather, keep damping the finished mortar surface for at least 24 hours to stop it from drying out too quickly.
- Do not apply on smooth surfaces.
- Only use panels without a "skin".
- Straight after application clean the tools with water and the coated surfaces with a damp cloth.
- Do not expose the material to the sun in hot weather.
- Store in original closed packaging in a dry place.



TECHNICAL CHARACTERISTICS

	Standard	RASOFINE ADHESIVE 04	RASOFINE ADHESIVE 07
Appearance		Powder	
Colour		White Grey	White Grey
Particle size		0 to 0.4 mm	0 to 0.7 mm
Apparent density	EN 1015-6	1.50 ± 0.10 kg/L	1.50 ± 0.10 kg/L
Mix water		26% ± 1%	26% ± 1%
Storage in original packaging in a dry place		12 months	12 months
Mix properties and workability	Standard		
Density of mix		1.80 ± 0.10 kg/L	1.80 ± 0.10 kg/L
pH mix		about 12	about 12
Workable mix duration (*)		about 2 hours	about 2 hours
Application temperature		5°C to +35°C	5°C to +35°C
Minimum application thickness		0.5 mm	1.0 mm
Maximum application thickness		2.0 mm	2.0 mm
Application		Manual or mechanical	Manual or mechanical
Performance characteristics	Standard	Product performance	Product performance
Class and type	EN 1504-3	R1 - PCC	R1 - PCC
Compression strength - after 28 days	EN 12190	≥10 MPa	≥10 MPa
Bending strength - after 28 days	EN 196-1	≥3 MPa	≥3 MPa
Chloride ion content	EN 1015-17	Absent	Absent
Bond strength	EN 1542	≥0.8 MPa	≥0.8 MPa
Thermal compatibility frost-thaw cycles - Part 1	EN 13687-1	≥0.8 MPa	≥0.8 MPa
Water absorption by capillarity	EN 13057	$w \leq 0.5 \text{ kg/m}^2\text{-h}^{0.5} - W1$	$w \leq 0.5 \text{ kg/m}^2\text{-h}^{0.5} - W1$
Permeability to water vapour	EN 1015-19	$\mu = 15$	$\mu = 15$
Thermal resistance - Operating temperature		-30°C to +90°C	-30°C to +90°C
Fire reaction	EN 13501-1	A1	A1
Hazardous substances	EN 1504-3	in accordance with note in ZA.1	in accordance with note in ZA.1

Test conditions: temperature 23±2°C, 50±5% R.H. and air velocity in test area <0.2 m/s. **The data shown may vary depending on the specific worksite conditions: temperature, humidity, ventilation, absorbency of the base coat.**

(*) The times indicated will be longer or shorter as the temperature drops or rises.

Compliant with the general principles defined in **EN 1504-3** - Principles for evaluating the use of products and systems.

The numerous possible uses and the possible interference of conditions or elements beyond our control, we assume no responsibility regarding the results which are obtained. The purchasers, of their own accord and under their own responsibility, must establish the suitability of the product for the envisaged use.

The figures shown are average indicative figures relevant to current production and may be changed or updated by INDEX at any time without previous warning. The advice and technical information provided, is what results from our best knowledge regarding the properties and the use of the product. Considering

PACKAGING

RASOFINE ADHESIVE 04

25-kg Sack

RASOFINE ADHESIVE 07

25-kg Sack

• FOR ANY FURTHER INFORMATION OR ADVICE ON PARTICULAR APPLICATIONS, CONTACT OUR TECHNICAL OFFICE • IN ORDER TO CORRECTLY USE OUR PRODUCTS, REFER TO INDEX TECHNICAL SPECIFICATIONS •

 Construction Systems and Products Via G. Rossini, 22 - 37060 Castel D'Azzano (VR) - Italy - C.P.67 T. +39 045 8546201 - F. +39 045 518390	Internet: www.index-spa.com Informazioni Tecniche Commerciali tecom@indexspa.it Amministrazione e Segreteria index@indexspa.it Index Export Dept. index.export@indexspa.it		 UNI EN ISO 9001	 UNI EN ISO 14001	 socio del GBC Italia	
---	---	---	---	---	---	---