



PREFIX ECO FIBERPROOF ECO

WATER-BASED PENETRATING AND CONSOLIDATING PRIMER FOR RENDERING DETERIORATED AND BRITTLE ASBESTOS CEMENT SHEETS HARMLESS THROUGH ENCAPSULATION. TO BE APPLIED BEFORE THE COLOURED WATER-BASED WATERPROOF COATING OF ELASTOLIQUID PUR

GRANTS *LEED* CREDITS

CHARACTERISTICS		ENVIRONMENTAL	METHOD OF USE				PRECAUTIONS
ONE-COMPONENT	WATER BASED		MIX MECHANICALLY	SPRAY APPLICATION	APPLY BY BRUSH	APPLY BY ROLLER	

PROBLEM

AN ECOLOGICAL WAY OF CONSOLIDATING SURFACES OF ASBESTOS CEMENT SHEETS PRIOR TO THEIR ENCAPSULATION



That of rendering asbestos cement roof sheeting harmless is becoming an increasingly important matter, with regard to safeguarding the environment, in view of the hazards caused by the continuous dispersion of the asbestos fibres in the air. One of the reclamation methods approved by the Ministerial Decree dated 6th September 1994, Law no. 257/92, is that of encapsulating the sheets. To bring the emission levels of asbestos fibres on the roof down to legal limits, the brittle surface has to be encapsulated by applying suitable penetrating and covering products, even without having to clean, in some cases, the soiled surface using high-pressure water cleaners, in compliance with applicable laws.

SOLUTION

PREFIX ECO is a fixing penetrating primer containing water-based synthetic resins. **FIBERPROOF ECO** is a consolidating and penetrating product with water-based synthetic resins.

The special features of these products is their capacity to penetrate deep into the brittle and soiled surface of the asbestos cement sheet, thus ensuring a high-grip surface for the subsequent treatment with the encapsulating coating ELASTOLIQUID PUR.

The painted films are different in colour to be able to distinguish the zones that have been treated with it, according to the provisions of current standards. Once dry, the films are tough and non-degradable; they also offer excellent resistance against weathering and ultra violet rays.

The products are water-based and consequently reduce environmental impact much more than other similar solvent-based products.

APPLICATION FIELDS

Penetrating primers recommended for rendering asbestos cement sheets harmless prior to encapsulation with coloured coating products.

ADVANTAGES

- Excellent penetration into the asbestos cement sheets at levels comparable with solvent-based products.
- Safe and non-flammable product.

METHOD OF USE

RENDERING TYPE "A" ASBESTOS-CEMENT SHEETS HARMLESS THROUGH ENCAPSULATION

Types of intervention in accordance with UNI10686 dated March 1998 "Appendix 2" approved by the Decree dated 20th August 1999, relevant to the extension of law no. 257 dated 27th March 1992.

A1 • Encapsulating treatment on the upper face (extrados) of clean asbestos cement sheets (type A: visible from the outside) with an average thickness of 300 µm.

1. Application of the first fixative, penetrating coat of blue, water-based **PREFIX ECO** with a yield of approximately 200-250 g/m² (2).
2. Application of two coats of the water-based waterproof coating ELASTOLIQUID PUR in two different and contrasting colours with a yield of approximately 450 g/m² per coat (4).

A2 • Encapsulating treatment on the upper face (extrados) of slightly soiled asbestos cement sheets (type A: visible from the out-

side) with average thickness of 300 µm.

These surfaces may be problematic to prepare. In fact, on one hand, common application practice requires all the soiled part to be removed, but in some cases on the other, after an attentive assessment on a case-to-case basis, the sheets can be encapsulated directly. It is however crucial to remove any moss that has grown on the surface using mechanical tools with vacuum pumps and suitable filters, in

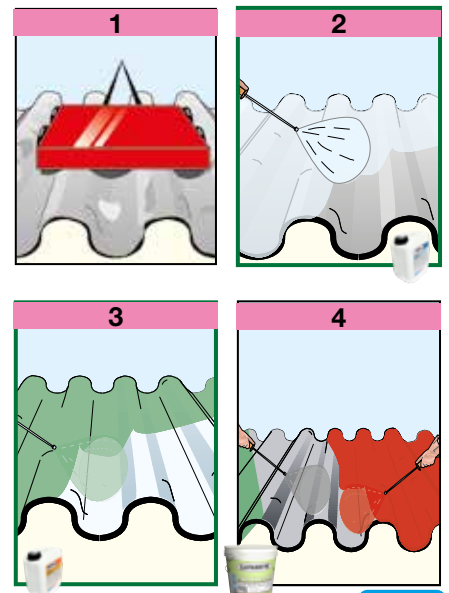
(See following)

CERTIFICATE OF CONFORMITY



Certificate of conformity "GFC chimica"

Technical and scientific suitability for rendering items in "A" type asbestos cement, harmless in the cycle with ELASTOLIQUID PUR.



TECHNICAL CHARACTERISTICS

	Standard	PREFIX ECO	FIBERPROOF ECO
Appearance		Liquid	Liquid
Colour		Light blue	Green
Density	EN 2811-1	1.00 ± 0.05 kg/L	1.01 ± 0.05 kg/L
Dry residue - at 130°C		28 ± 2%	33 ± 2%
Storage in original packaging in a dry place, away from frost		12 months	12 months
Workability characteristics			
Application thickness		0.3 mm	0.3 mm
Waiting time - for dust-free drying (*)		60 minutes	60 minutes
Waiting time - for complete drying (*)		2 ÷ 3 hours	2 ÷ 3 hours
Application temperature		+5°C to +35°C	+5°C to +35°C
Application		manual or spray	manual or spray

Test conditions: temperature 23±2°C, 50±5% R.H. and air velocity in test area <0.2 m/s. **These parameters may vary based on the specific conditions of the worksite: temperature, humidity, ventilation, porosity of the substrate.**

(*) The times indicated will be longer or shorter as the temperature drops or rises.

(See previous)

accordance with law (1).

1. Application of a coat of penetrating and consolidating, blue, water-based **PREFIX ECO** primer with a yield of approximately 200-250 g/m² (2).
2. Application of a coat of penetrating and consolidating, green, water-based **FIBREPROOF ECO** primer with a yield of approximately 200-250 g/m² (3).
3. Application of two coats of the water-based waterproof coating ELASTOLIQUID PUR in two different and contrasting colours with a yield of approximately 450 g/m² per coat (4).

• COVERAGE

The yield of **PREFIX ECO** and **FIBERPROOF ECO** is approximately 200-250 g/m² per coat.

• PRECAUTIONS

- Keep the containers sealed before use.
- Apply at temperatures between +5°C and +35°C. Extreme conditions of heat and cold must be avoided during application. Do not apply if the temperature is likely to drop below +5°C while the paint film is drying.
- Apply by spraying each coat in the opposite direction to the previous one, so as to ensure total surface coverage.
- Apply the second coat of **FIBERPROOF ECO** once the first coat of **PREFIX ECO** is

perfectly dry.

- Do not use the product for surfaces or containers in contact with liquids for human consumption, drinking water or which may come into contact with solvents or mineral oils.
- After use, clean tools with water and, if the product has already dried, we advise you to use white spirit or hot water to remove it.
- Store **PREFIX ECO** and **FIBERPROOF ECO** in their original packaging.
- The product is subject to freezing; store at temperatures above +5°C.

the numerous possible uses and the possible interference of conditions or elements beyond our control, we assume no responsibility regarding the results which are obtained. The purchasers, of their own accord and under their own responsibility, must establish the suitability of the product for the envisaged use.

The figures shown are average indicative figures relevant to current production and may be changed or updated by INDEX at any time without previous warning. The advice and technical information provided, is what results from our best regarding the properties and the use of the product. Considering

PACKAGING

PREFIX ECO
20-litres Can.

FIBERPROOF ECO
20-litres Can.

• FOR ANY FURTHER INFORMATION OR ADVICE ON PARTICULAR APPLICATIONS, CONTACT OUR TECHNICAL OFFICE • IN ORDER TO CORRECTLY USE OUR PRODUCTS, REFER TO INDEX TECHNICAL SPECIFICATIONS •

 Construction Systems and Products Via G. Rossini, 22 - 37060 Castel D'Azzano (VR) - Italy - C.P.67 T. +39 045 8546201 - F +39 045 518390	Internet: www.index-spa.com Informazioni Tecniche Commerciali tecom@indexspa.it Amministrazione e Segreteria index@indexspa.it Index Export Dept. index.export@indexspa.it		 UNI EN ISO 9001	 UNI EN ISO 14001	 socio del GBC Italia	