



GRANTS *LEED* CREDITS

# INDEMASTIC

WATER-BASED BITUMEN WATERPROOFING AGENT  
FOR CONCRETE FOUNDATIONS NOT SUBJECT TO EXPANSION

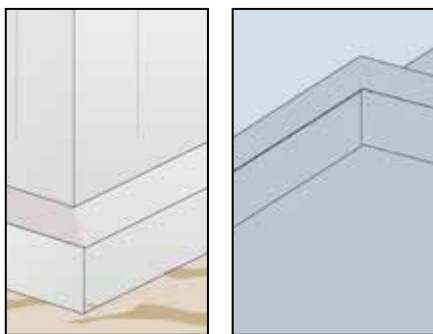
# IDROLASTIK

WATER-BASED ELASTOMERIC BITUMEN WATERPROOFING  
AGENT FOR CONCRETE FOUNDATIONS AND ROOFS

CHARACTERISTICS			ENVIRONMENTAL	METHOD OF USE				PRECAUTIONS
ONE-COMPONENT	WATER BASED	WATERPROOFING	ECO GREEN	MIX MECHANICALLY	SPRAY APPLICATION	APPLY BY BRUSH	APPLY BY ROLLER	STORAGE: KEEP AWAY FROM FROST

## PROBLEM

### WATERPROOFING CONCRETE SURFACES



Concrete structures of terraces and foundations without joints or built on surfaces made up of filling materials are subject to constant settling, which causes cracks along the lines with the highest tension. It is therefore necessary to use elastomeric bitumen waterproofing products to protect them from infiltration problems when polymer bitumen membranes cannot be used.

## SOLUTION

**IDROLASTIK** is a ready-to-use thixotropic paste, made of a bitumen emulsion enriched with selected resins which make the dried film very elastic and waterproof. The product is highly adhesive and resistant to many diluted acids, water and most saline solutions. Once dry, the **IDROLASTIK** film forms a black, flexible coating that is not affected by thermal shock and neither runs at high temperatures nor cracks at low temperatures.

**INDEMASTIC** is a special emulsion obtained by mixing top quality bitumens with thixotropic fillers and emulgators.

## APPLICATION FIELDS

**IDROLASTIK** is a bituminous product with good waterproofing properties, making it suitable to be used as an elastic liquid sheath in urgent repair jobs.

**IDROLASTIK** is used for waterproofing and repairing foundations, roofs and terraces subject to thermal expansion.

**INDEMASTIC** is used to repair, seal and waterproof foundations, sheds or non-walkable slabs of flat, pitched or curved roofs with micro-cracks or cracks not subject to strong expansion.



## ADVANTAGES

- Non-toxic.
- Non-flammable.
- **IDROLASTIK** has high elasticity.
- Good resistance to saline solutions.

## METHOD OF USE

### • SURFACE PREPARATION

Before starting, it is essential to remove all dirt, dust, grease, oil and moss from the surface, which could prevent the perfect adhesion of the liquid bitumen waterproofing products to the surface.

In these cases it is recommended to brush them. In some special cases, it may be necessary to use high pressure water cleaners or dry sand blasting. For particularly loose and dusty sur-

faces, it is essential to apply a coat of ECOVER bitumen primer before applying the bitumen waterproofing agent.

### • APPLICATION

Mix before use with mechanical drills (1). Apply with a large brush, paint brush or roller (2). They can be applied with a spray gun after dilution with water. To obtain a waterproofing sheath, it is recommended to apply at least two or three coats of product. The second coat must

always be applied on the film of the perfectly dry first coat. Never exceed a dry film thickness of 0.3 mm for each coat (about 0.500 kg/m<sup>2</sup> per coat) so as not to hinder the evaporation of the water contained in the liquid bitumen product, which

would otherwise remain stuck under the dried film. Temperatures of over 35°C jeopardise the workability of the product since the film dries too quickly on the surface. If the applied product remains exposed, the dried film should be protected with reflective paint (WHITE REFLEX or SOLARIS) or coloured decorative water-based paints (INDECOLOR) (3).

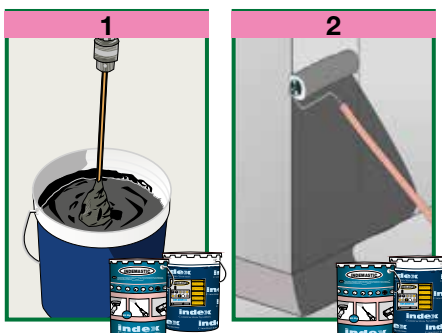
For surfaces with micro-cracks or to improve the mechanical resistance of the film in the areas most subject to strain, it is always recommended to insert a 60 g/m<sup>2</sup> RINFOTEX non-woven polyester fabric reinforcement between each coat of **IDROLASTIK**.

**INDEMASTIC** can be used as a primer for concrete, by adding about 30% water and shaking.

### • CONSUMPTION

The consumption for **IDROLASTIK** is about 400-500 g/m<sup>2</sup> per coat; two coats recommended. The consumption of **INDEMASTIC** is about 1.5 kg/m<sup>2</sup>.

(See following)



## TECHNICAL CHARACTERISTICS

	Standard	INDEMASTIC	IDROLASTIK
Appearance		Pasty liquid	Pasty liquid
Colour		Black	Black
Density	EN 2811-1	1.10 ± 0.10 kg/ℓ	1.10 ± 0.10 kg/ℓ
Dry residue - at 130°C	UNI EN ISO 3251	50 ± 5%	70 ± 3%
Brookfield viscosity	UNI EN ISO 2431	41 000 ± 15 000 cps	30 000 ± 5 000 cps
Shelf life in original packaging (dry stored)		12 months	12 months
<b>Mix characteristics and workability</b>			
Application temperature		+5°C ÷ +35°C	+5°C ÷ +35°C
Application thickness		0.6 mm (two coats)	0.6 mm (two coats)
Waiting time - dust-free drying (*)		30 ÷ 60 minutes	2 ÷ 4 hours
Waiting time - touch dry (*)		90 ÷ 120 minutes	6 hours
Waiting time - recoating (*)		12 ÷ 24 hours	24 hours
Application		manual or spray	manual or spray
<b>Performance characteristics</b>			
	Standard	Product performance	Product performance
<b>Class and type</b>	EN 1504-2	<b>C PI-MC-IR</b>	<b>C PI-MC-IR</b>
Cold flexibility	UNI 1109	-	-10°C
<b>Permeability to aqueous vapour</b>	EN 7783-1	5 m ≤Sd <50 m - class II	5 m ≤Sd <50 m - class II
<b>Adherence test</b>	EN 1542	≥1.0 MPa	≥1.0 MPa
<b>Capillary water absorption</b>	EN 1062-3	w < 0.01 kg/m <sup>2</sup> ·h <sup>0.5</sup>	w < 0.01 kg/m <sup>2</sup> ·h <sup>0.5</sup>
<b>Permeability to CO<sub>2</sub></b>	EN 1062-6	Sd >50 m	Sd >50 m
Ultimate elongation	NFT 46002	-	1 000 ÷ 1 500%
Ultimate tensile strength	NFT 46002	-	0.15 ÷ 0.6 MPa
Thermal resistance - Operating temperature		-30°C ÷ +90°C	-30°C ÷ +90°C
<b>Hazardous substances</b>	EN 1504-2	According note in ZA.1	According note in ZA.1

Test conditions: temperature 23±2°C, 50±5% R.H. and air velocity in test area <0.2 m/s. **These data may change depending on specific site conditions: temperature, ventilation, moisture and substrate absorbency.**

(\*) The times indicated will be longer or shorter as the temperature drops or rises.

Pursuant to European standard EN 1504-2 - General principles for the use of products and systems.

(See previous)

### • PRECAUTIONS

- Conditions of extreme heat and cold should be avoided during application. Do not apply if the temperature may drop below +5°C while the film is drying.
- Protect the surface from driving rain for 12 hours at least during summer time or 24 hours in winter time
- Do not apply on very hot supports, as the filming process would be excessively accelerated with negative consequences regarding the adhesion of the product to the support.
- Do not apply in foggy weather or in very humid conditions which delay the filming and drying process. Do not apply the product when there is a risk of imminent rainfall which could wash the paint that has not dried yet.

- Do not apply on wet surfaces.
- Do not mix with cement.
- In case of product grounds in the pails, mix accurately up to complete homogeneization before its use
- Do not use to waterproof tanks, cellars or drains subject to high water counterthrust or to water under pressure.
- Do not apply to waterproof surfaces or containers of eatable liquids, for drinking water or which may get in contact with solvents of mineral oils
- The surface of IDROLASTIK's elastomeric liquid membrane, once applied, in general shows superficial hydrocarbon efflorescences, which may cause some difficulties for bonding SOLARIS or INDECOLOR to the film. We recommend painting over the IDROLASTIK bituminous coating only some months after application.

- Do not apply INDEMASTIC on surfaces where it could be protracted ponding water.
- The IDROLASTIK film cannot be considered a coating which can be walked on. The coating can be walked on only during occasional maintenance operations.
- After use of these products, clean the tools with oil or other common diluents (synthetic, oil of turpentine, nitre). Deep the tools and avoid the product drying on them also during application
- Keep original packaging at temperature not lower than +5°C. Close them after use

the numerous possible uses and the possible interference of conditions or elements beyond our control, we assume no responsibility regarding the results which are obtained. The purchasers, of their own accord and under their own responsibility, must establish the suitability of the product for the envisaged use.

The figures shown are average indicative figures relevant to current production and may be changed or updated by INDEX at any time without previous warning. The advice and technical information provided, is what results from our best knowledge regarding the properties and the use of the product. Considering

## PACKAGING

### INDEMASTIC

- 200-kg Drums
- 20-kg Pail
- 10-kg Bucket
- 5-kg Bucket

### IDROLASTIK

- 20-kg Pail
- 5-kg Bucket

• FOR ANY FURTHER INFORMATION OR ADVICE ON PARTICULAR APPLICATIONS, CONTACT OUR TECHNICAL OFFICE • IN ORDER TO CORRECTLY USE OUR PRODUCTS, REFER TO INDEX TECHNICAL SPECIFICATIONS •

**index**  
Construction Systems and Products  
Via G. Rossini, 22 - 37060 Castel D'Azzano (VR) - Italy - C.P.67  
T. +39 045 8546201 - F +39 045 518390

Internet: [www.index-spa.com](http://www.index-spa.com)  
Informazioni Tecniche Commerciali  
[tecom@indexspa.it](mailto:tecom@indexspa.it)  
Amministrazione e Segreteria  
[index@indexspa.it](mailto:index@indexspa.it)  
Index Export Dept.  
[index.export@indexspa.it](mailto:index.export@indexspa.it)

