



# COATBOND

SMOOTHING ADHESIVE FOR BONDING AND SMOOTHING EXTERNAL WALL INSULATION SYSTEMS AND FOR SKIMMING CRACKS IN VARIOUS SURFACES

## COATBOND FINE FIBER

FIBRE REINFORCED SMOOTHING ADHESIVE FOR BONDING AND SMOOTHING EXTERNAL WALL INSULATION SYSTEMS AND FOR SKIMMING CRACKS IN VARIOUS SURFACES

GRANTS *LEED* CREDITS

CHARACTERISTICS			ENVIRONMENTAL	METHOD OF USE					PRECAUTIONS
ONE-COMPONENT	WATER BASED	ALLOWS TO BREATHE	ECO GREEN	RECYCLABLE	MIX MECHANICALLY	APPLY BY TOOTHED SPATULA	APPLY BY TROWEL	APPLY BY INOX SPATULA	STOCCAGGIO: IN LUOGO ASCIUTTO

### PROBLEM

#### BONDING AND SKIMMING EXTERIOR WALL INSULATION PANELS



### SOLUTION

The exterior wall insulation panels used on residential buildings need to be bonded securely so that they remain firmly in place over time. **COATBOND** is a smoothing adhesive, consisting of Portland cement, special resins, selected aggregates and additives to improve its workability and adhesion. **COATBOND FINE FIBER** is a fibre-reinforced smoothing adhesive, consisting of Portland cement, special resins, selected aggregates, synthetic fibres and additives to improve its workability and adhesion.

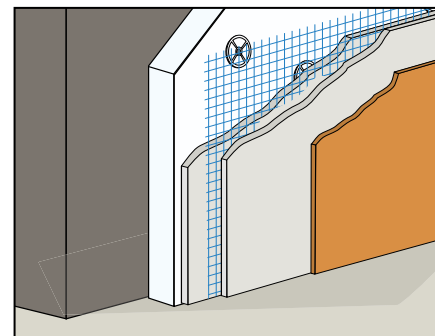


### ADVANTAGES

- Easy-to-use one-component products.
- Secure adhesion.

### APPLICATION FIELDS

**COATBOND** and **COATBOND FINE FIBER** are products used in the exterior wall insulation system with excellent adhesion to various surfaces such as concrete, cement-based mortar, brick etc. Ideal as a skimming layer over old plastic coatings, or on concrete surfaces with adhesion problems.



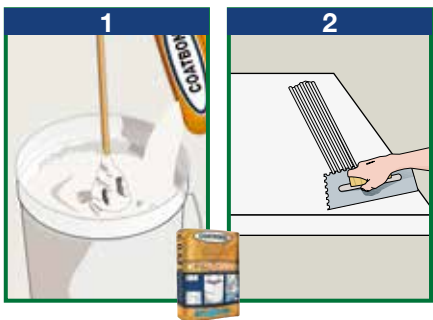
### METHOD OF USE

#### • PREPARING THE SUBSTRATE

When applying over powdery plaster, it is always a good rule to apply a coat of PRIMER FIX first, to fix the powdery parts.

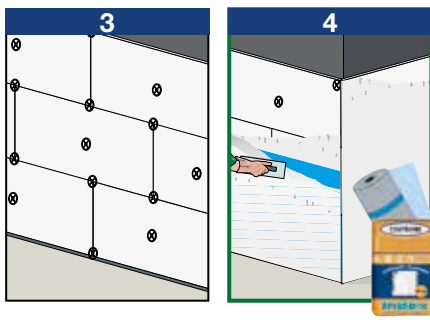
#### • PREPARING THE MIX

**COATBOND** and **COATBOND FINE FIBER** should be mixed with approximately 26% clean water (roughly 6.5 litres per bag), using a mechanical low-speed stirrer, to obtain a smooth and lump-free paste (1). The mix remains workable for roughly 3-4 hours, depending on the weather conditions.



#### • APPLICATION

The **COATBOND** and **COATBOND FINE FIBER** are used to bond panels made of expanded and extruded polystyrene, polyurethane, wood fibre, fibreglass, mineral fibre and cork. The product is spread using a toothed trowel or it is applied in dabs (spot-bonding), also making sure to spread it around the perimeter of the panel to improve stability (2). The panels will subsequently be placed and gently pressed against the wall (3). Always start applying the product uniformly from the bottom upwards, making horizontal layers of



panels. After at least 24 hours, **COATBOND** or **COATBOND FINE FIBER** will be used as a smoothing layer over the insulation panels, sinking RETINVETRO PER RASANTI fibreglass reinforcement into the first coat (4) (the mesh should be pressed using a float against the fresh layer and arranged over the joints by at least 10 cm). Do not use the product on panels that have a "skin" because it will not bond to them. **The panels should be fixed further using plastic nails with flat mushroom heads.**

#### • CONSUMPTION

Used as an adhesive: 4-6 kg/m<sup>2</sup>; as a skimming coat: 2-3 kg/m<sup>2</sup>.

(See following)

View the application video on your Smartphone



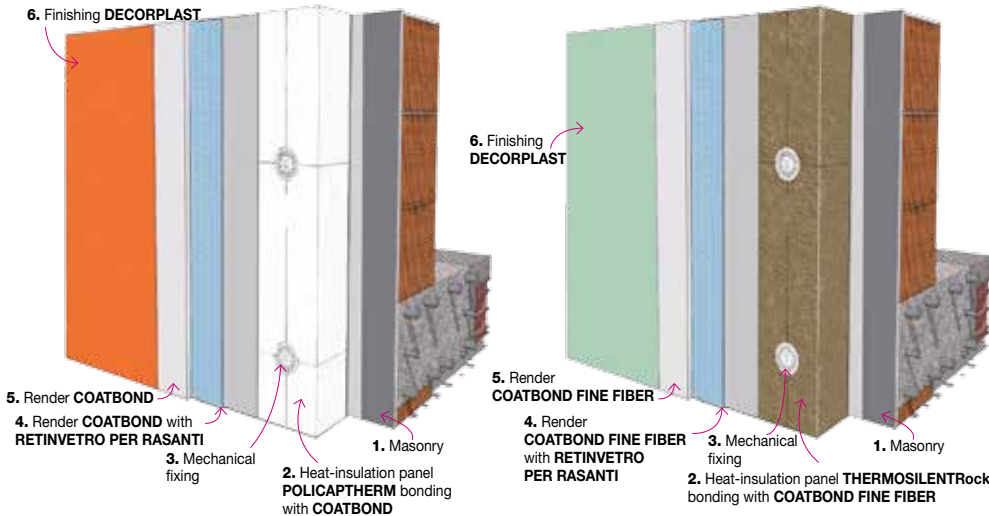
# TECHNICAL CHARACTERISTICS

	Standard	COATBOND FINE FIBER		COATBOND	
		White	Grey	White	Grey
Appearance		Powder		Powder	
Colour		White	Grey	White	Grey
Particle size		0 to 0.4 mm		0 to 0.7 mm	
Apparent density	EN 1015-6	1.40 ± 0.10 kg/L		1.40 ± 0.10 kg/L	
Mix water		26% ± 1%		26% ± 1%	
Storage in original packaging in a dry place		12 months		12 months	
<b>Mix properties and workability</b>					
Density of mix		1.50 ± 0.10 kg/L		1.50 ± 0.10 kg/L	
pH of mix		about 12		about 12	
Workable mix duration (*)		about 3-4 hours		about 3-4 hours	
Application temperature		+5°C to +35°C		+5°C to +35°C	
Minimum application thickness		0.5 mm		1.0 mm	
Maximum application thickness		2.0 mm		2.0 mm	
Application		Manual or mechanical		Manual or mechanical	
<b>Performance characteristics</b>					
<b>Class and type</b>	<b>EN 1504-3</b>	<b>R1 - PCC</b>		<b>R1 - PCC</b>	
<b>Compression strength - after 28 days</b>	<b>EN 12190</b>	≥10 MPa		≥10 MPa	
<b>Bending strength - after 28 days</b>	<b>EN 196-1</b>	≥3 MPa		≥3 MPa	
<b>Chloride ion content</b>	<b>EN 1015-17</b>	Absent		Absent	
<b>Bond strength</b>	<b>EN 1542</b>	≥0.8 MPa		≥0.8 MPa	
<b>Thermal compatibility with frost-thaw cycles - Part 1</b>	<b>EN 13687-1</b>	≥0.8 MPa		≥0.8 MPa	
Absorption of water by capillarity	<b>EN 13057</b>	w ≤ 0.5 kg/m <sup>2</sup> ·h <sup>0.5</sup> - W1		w ≤ 0.5 kg/m <sup>2</sup> ·h <sup>0.5</sup> - W1	
Permeability to water vapour	<b>EN 1015-19</b>	μ = 40		μ = 40	
Thermal resistance - Operating temperature		-30°C to +90°C		-30°C to +90°C	
<b>Fire reaction</b>	<b>EN 13501-1</b>	A1		A1	
<b>Hazardous substances</b>	<b>EN 1504-3</b>	In accordance with note in ZA.1		in accordance with note in ZA.1	

Test conditions: temperature 23±2°C, R.H. 50±5% and air speed in test area <0.2 m/s. The data shown may vary depending on the specific work site conditions: temperature, humidity, ventilation, absorbency of the base coat.

(\*) The times indicated will be longer or shorter as the temperature drops or rises.

Compliant with the general principles defined in EN 1504-3 - Principles for evaluating the use of products and systems.



COATBOND and COATBOND FINE FIBER can be used with any thermal-insulation panel in any external wall insulation layer structure.

### • PRECAUTIONS

- Use cold water in summer and water at 20°C in winter.
- Application temperature from +5°C to +35°C.

- Do not add water once the mix has started to set.
- Do not add any other materials such as cement, aggregates and additives.
- In hot weather, keep dampening the finished mortar surface for at least 24 hours to stop it from drying out too quickly.
- Do not apply on smooth surfaces.
- Only use panels without a "skin".
- Consult Index technical specifications «EXTERIOR WALL THERMAL INSULATION AND INSULATION PLASTER»
- Straight after application, clean tools with water and the coated surfaces with a damp cloth.
- Do not expose the material to the sun in hot weather.
- Store in original closed packaging in a dry place and protect from frost or high temperatures.



## PACKAGING

**COATBOND**  
25-kg Sack

**COATBOND FINE FIBER**  
25-kg Sack

• FOR ANY FURTHER INFORMATION OR ADVICE ON PARTICULAR APPLICATIONS, CONTACT OUR TECHNICAL OFFICE • IN ORDER TO CORRECTLY USE OUR PRODUCTS, REFER TO INDEX TECHNICAL SPECIFICATIONS •

**index**  
Construction Systems and Products

Via G. Rossini, 22 - 37060 Castel D'Azzano (VR) - Italy - C.P.67  
T. +39 045 8546201 - F. +39 045 518390

Internet: [www.index-spa.com](http://www.index-spa.com)  
Informazioni Tecniche Commerciali  
[tecom@indexspa.it](mailto:tecom@indexspa.it)  
Amministrazione e Segreteria  
[index@indexspa.it](mailto:index@indexspa.it)  
Index Export Dept.  
[index.export@indexspa.it](mailto:index.export@indexspa.it)



the numerous possible uses and the possible interference of conditions or elements beyond our control, we assume no responsibility regarding the results which are obtained. The purchasers, of their own accord and under their own responsibility, must establish the suitability of the product for the envisaged use.

The figures shown are average indicative figures relevant to current production and may be changed or updated by INDEX at any time without previous warning. The advice and technical information provided, is what results from our best knowledge regarding the properties and the use of the product. Considering