



# TOPSILENTRock

SELF-SUPPORTING THERMAL-ACOUSTIC INSULATION MADE WITH ROCK WOOL PRECOUPLED TO HIGH DENSITY SOUNDPROOF FOIL, IMPERMEABLE TO AIR AND VAPOUR, FOR THE THERMAL-ACOUSTIC INSULATION OF CONVENTIONAL CAVITY WALL GAPS AND WALLS WITH PLASTERBOARD FINISH MOUNTED ON A METAL FRAME. AVAILABLE AS:

- VERSION IN POLYETHYLENE PACKAGING • VERSION WITHOUT PACKAGING

GRANTS *LEED* CREDITS

CHARACTERISTICS			ENVIRONMENTAL		
ACOUSTIC INSULATION	THERMAL INSULATION	REACTION TO FIRE	ECO GREEN	RECYCLABLE	SAFE WASTE

## 1 PROBLEM

Many thermal insulation products used to fill-in air spaces in brick walls do not insulate against noise and are permeable to air and vapour.

## 2 SOLUTION

**TOPSILENTRock** is a thermal-acoustic insulation panel, coupled with a sound-resistant foil that also acts as a vapour barrier. It is suitable for insulating air spaces in internal dividing walls between different dwellings and for insulating external perimeter walls.

It consists of a fire-proof rigid panel in high density rock wool with thermo-setting resins, with reaction to fire in European class B-s1,d0. One face of the panel is lined with the high density TOPSILENTBitex foil, which has the acoustic insulation properties of a foil of lead but is actually completely free from lead. TOPSILENTBitex acts as an insulation plastering resistant to air, vapour and noise. In the packaged version, each panel is protected by polyethylene packaging that protects it against damp and prevents contact with the fibres and also dispersion of the same in the environment. The marking "Side A - Side facing the user" identifies the face on which the TOPSILENTBitex foil is glued.

**TOPSILENTRock** reduces site work. Just one product is laid to apply both the thermal-acoustic insulation and the layer resistant to air and vapour. With **TOPSILENTRock** there is no longer any need to plaster the internal face of the air space.

## APPLICATION FIELDS

**TOPSILENTRock** is used in the building industry for the acoustic insulation of internal walls and for the acoustic and thermal insulation of external perimeter walls.

It is used to fill-in air spaces in double walls where the fibrous part reduces vibrations

and connective movements of air, while the sound-resistant foil seals the pores in the wall. It can also be used to insulate plasterboard walls.

## METHOD OF USE

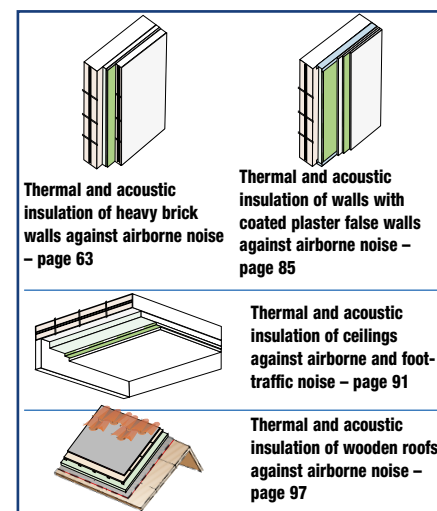
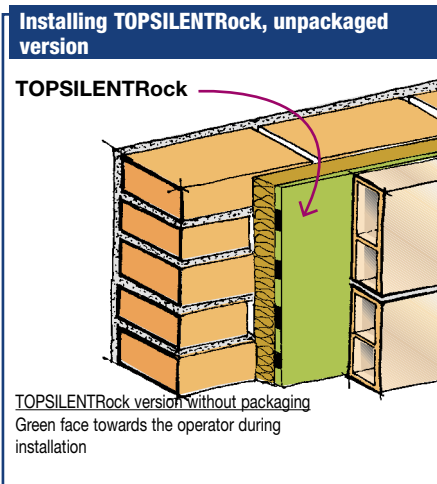
The **TOPSILENTRock** panel is fitted in the air space progressively as the second part of the double wall is erected.

With the packaged version, once you have laid the first row of bricks of the second wall, insert the panels, resting them against the existing wall with the marking "Side A - Side facing the user" towards the operator. Continue erecting the wall, taking care not to compress the insulation material, but keeping it slightly detached from the panel, otherwise, if the wall is erected before the mortar has set, it could be deformed or demolished by the elastic reaction of the insulation material.

Rest the second row of panels on the first after the height of the wall has risen above the first row of panels. In plasterboard walls and false-walls on framework, fit the insulation panel in its seat on the metal uprights with the marking "Side A - Side facing the user" towards the operator, the same as in the case of false-walls. With the unpackaged version, the face of the panel

facing the operator will be that lined with the green fabric.

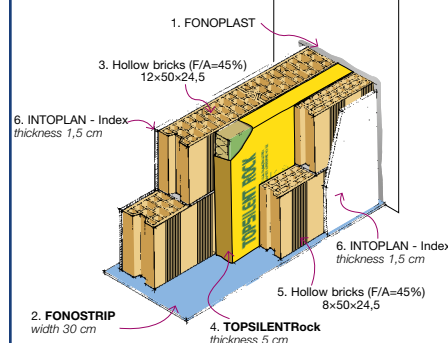
To cut the panel, first cut the foil with a Stanley knife and then cut the wool with a rip saw for wood.



## Double insulated wall (brick with pores) - thickness 12+8 cm

Certification "ITC-CNR" n. 4167/RP/06

SOUNDPROOFING POWER  $R_w = 57.0$  dB







2<sup>nd</sup> DIVISION  
2<sup>nd</sup> LINE



5<sup>th</sup> DIVISION  
2<sup>nd</sup> LINE

# TOPSILENTRock

**Product: TOPSILENTRock**

Type		40	50	60
Thickness		42.5 mm	52.5 mm	62.5 mm
Mass per unit area		4.1 kg/m <sup>2</sup>	4.5 kg/m <sup>2</sup>	4.9 kg/m <sup>2</sup>
Dimension		0.60x1.00 m	0.60x1.00 m	0.60x1.00 m
Thermal resistance R	EN 12667	1.05 m <sup>2</sup> K/W	1.35 m <sup>2</sup> K/W	1.60 m <sup>2</sup> K/W
Dynamic stiffness	UNI EN 29052/1		s' < 30 MN/m <sup>3</sup>	
Resistivity to air flow r			14.90 KPas/m <sup>2</sup>	
 CE thermal insulation code	EN 13163	MW-EN13162-T4-WS-WL(P)-Af5-MU1		
<b>Fire reaction classification (UNI 9177) of the soundproof foil (*)</b>		<b>Euroclass B, s1-d0 (*)</b>		
<b>Certification</b>		  		
<b>Constituting element: TOPSILENTBitex phonoresilient foil</b>			approx. 2.5 mm	
Thickness			2.5 kg/m <sup>2</sup>	
Mass per unit area			s' < 2 MN/m <sup>3</sup>	
Dynamic stiffness	UNI EN 29052/1		μ 100 000	
Aqueous vapour diffusion coefficient			0.17 W/mK	
Thermal conductivity λ			1.30 KJ/kgK	
Specific heat.				
<b>Constituting element: rock wool panel</b>			40 ÷ 60 mm	
Thickness			40 kg/m <sup>3</sup>	
Density.	UNI 9947		0.037 W/mK	
Thermal conductivity λ			1.03 KJ/kgK	
Specific heat.				

(\*) Certificate LAPI n. 730.0DC0050/06.

the numerous possible uses and the possible interference of conditions or elements beyond our control, we assume no responsibility regarding the results which are obtained. The purchasers, of their own accord and under their own responsibility, must establish the suitability of the product for the envisaged use.

The figures shown are average indicative figures relevant to current production and may be changed or updated by INDEX at any time without previous warning. The advice and technical information provided, is what results from our best knowledge regarding the properties and the use of the product. Considering

• THE TECHNICAL SPECIFICATIONS MAY BE VIEWED AND DOWNLOADED ON THE RELEVANT PRODUCT DATA SHEET AT [www.indexspa.it](http://www.indexspa.it) •

• FOR THE CORRECT USE OF OUR PRODUCTS, CONSULT INDEX TECHNICAL SPECIFICATIONS • FOR FURTHER INFORMATION OR SPECIAL USES, CONSULT OUR TECHNICAL OFFICE •

 <p>Construction Systems and Products</p> <p>Via G. Rossini, 22 - 37060 Castel D'Azzano (VR) - Italy - C.P.67 T. +39 045 8546201 - F. +39 045 518390</p>	<p>Internet: <a href="http://www.index-spa.com">www.index-spa.com</a> Informazioni Tecniche Commerciali <a href="mailto:tecom@indexspa.it">tecom@indexspa.it</a> Amministrazione e Segreteria <a href="mailto:index@indexspa.it">index@indexspa.it</a> Index Export Dept. <a href="mailto:index.export@indexspa.it">index.export@indexspa.it</a></p>		<p>TOTAL QUALITY <b>index</b></p>  <p>UNI EN ISO <b>9001</b></p>	<p>Environmental Management Systems <b>index</b></p>  <p>UNI EN ISO <b>14001</b></p>	 <p><b>index</b> "GBC Italia" Associated</p>	 <p><b>Associated ANIT</b></p>
---	--	---	--	---	---	---