



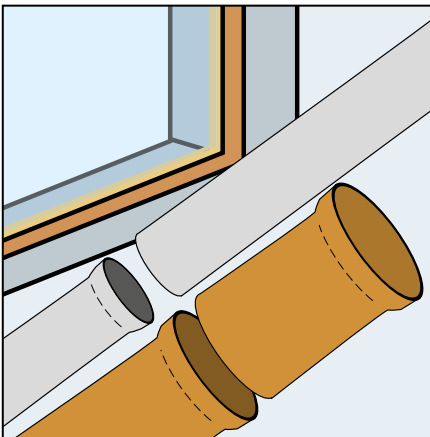
SigilCol

ECOLOGICAL UNIVERSAL ADHESIVE SEALANT FOR SEALING AND BONDING ON PVC, METAL, GLASS, WOOD AND CONCRETE

CHARACTERISTICS	ENVIRONMENTAL	METHOD OF USE	PRECAUTIONS
 WATERPROOFING		 APPLY BY GUN	

PROBLEM

SEALING JOINTS OF PVC ELEMENTS AND IN GENERAL OF ALL SITE SUPPORTS AND MATERIALS



Sealing PVC elements in buildings is particularly difficult without the use of special products that must guarantee a perfect seal also under the most severe conditions.

SOLUTION

SigilCol is an adhesive sealant that ensures very high performance bonding and sealing and remains permanently elastic even at very low and high temperatures. Adhesion is very effective and strong on the supports commonly used in building, including PVC.

SigilCol is highly thixotropic and can be painted over with suitable water or solvent based paints.

APPLICATION FIELDS

SigilCol is a very versatile product that can be used in all applications that require the sealing of PVC, metal, sheet steel (stainless and painted), aluminium, glass, wood, concrete, enamelled surfaces, polystyrene and rigid plastic materials. It is suitable both for sealing and bonding in the building industry, for sealing floor joints and low movement wall joints, and in the automotive, bodywork, railway and ship industries.

ADVANTAGES

- Permanently flexible between -40 and + 100°C.
- Ecological – no solvents or risk symbols.
- Odourless.
- Does not swell or shrink.
- Does not form bubbles.
- Excellent adhesion, even on damp surfaces.
- Easy application.
- Absorbs vibrations.
- Excellent resistance and stability to U.V. rays
- Paintable.
- Neutral behaviour does not corrode support surfaces.
- Mould resistant.

METHOD OF USE

The surfaces must be clean and free from oil, grease, dust, rust, etc.

Clean non-porous smooth surfaces with solvent and considering the high number of materials included in the application sectors, it is recommended to perform a preliminary test with or without rubbing with sandpaper.

• APPLICATION

Apply with a standard sealant gun and spread

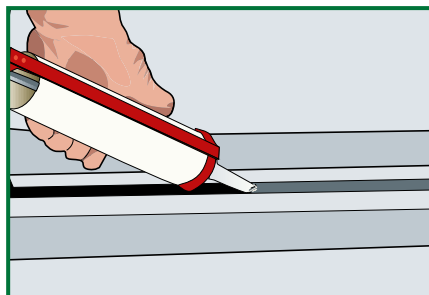
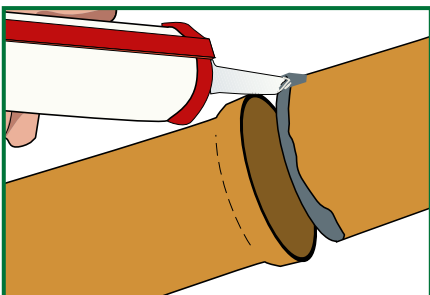
with a stainless steel spatula.

• COVERAGE

3 linear metres/cartridge with 1x1cm joint.

• PRECAUTIONS

- Clean tools with alcohol or a solvent. Once it has set the product can only be removed mechanically.
- Avoid sealing joints wider than 2 cm
- The depth of an expansion joint must be about half the width.



TECHNICAL CHARACTERISTICS

	Standard	SigilCol
Appearance		Dense paste
Colour		Grey
Chemical nature		ilane modified polymer
Polymerisation		Hygrosetting
Density		1.55 ± 0.05 kg/L
Stability in closed cartridges		12 months
Mix characteristics and workability		
Useful working time (*)		approx 30 minutes
Application temperature		+5°C ÷ +40°C
Waiting time - Film polymerisation time (thickness 3 mm) (*)		24 hours
Performance characteristics		
Product performance		
Tensile strength		2.80 N/mm²
Ultimate elongation		>450%
E-Modulus at 100% dilation		1.20 N/mm²
Shore A Hardness Scale		35-40
Resistenza termica - Temperatura d'esercizio		-40°C ÷ +100°C

Test conditions: temperature 23±2°C, R.H. 50±5% and air speed in the test area <0.2 m/s. These figures may vary depending on the specific conditions of the worksite: temperature, humidity, ventilation, absorbency of the base coat.

(*) The stated times may be longer or shorter as the temperature decreases or increases.

the numerous possible uses and the possible interference of conditions or elements beyond our control, we assume no responsibility regarding the results which are obtained. The purchasers, of their own accord and under their own responsibility, must establish the suitability of the product for the envisaged use.

The figures shown are average indicative figures relevant to current production and may be changed or updated by INDEX at any time without previous warning. The advice and technical information provided, is what results from our best knowledge regarding the properties and the use of the product. Considering

PACKAGING

290-cc Cartridge in Pack of 12 cartridge

• FOR ANY FURTHER INFORMATION OR ADVICE ON PARTICULAR APPLICATIONS, CONTACT OUR TECHNICAL OFFICE • IN ORDER TO CORRECTLY USE OUR PRODUCTS, REFER TO INDEX TECHNICAL SPECIFICATIONS •

index
Construction Systems and Products

Via G. Rossini, 22 - 37060 Castel D'Azzano (VR) - Italy - C.P.67
T. +39 045 8546201 - F. +39 045 518390

Internet: www.index-spa.com
Informazioni Tecniche Commerciali
tecom@indexspa.it
Amministrazione e Segreteria
index@indexspa.it
Index Export Dept.
index.export@indexspa.it

