

RASOSTUK GYPS

ONE-COMPONENT GYPSUM-BASED SMOOTHING PRODUCT
FOR FINISHING OFF INTERIOR PLASTERING

GRANTS *LEED* CREDITS

CHARACTERISTICS	ENVIRONMENTAL	METHOD OF USE		PRECAUTIONS
 ALLOWS TO BREATHE	 ECO GREEN	 RECYCLABLE	 MIX MECHANICALLY	 APPLY BY INOX SPATULA STORAGE: IN A DRY PLACE

PROBLEM

SMOOTHING OFF IN THICK LAYERS AND FINISHING OFF WITH JUST ONE PRODUCT



SOLUTION

RASOSTUK GYPS can be used on walls and ceilings on any type of gypsum or cement lime-based plaster substrate.

It is a premixed product with base of calcium sulphate hemihydrate, hydrated lime and selected calcium carbonate and additives that ensure smooth and mirror finishes. It is easy to work and quick to apply.



GYPSUM-BASED BINDERS
AND PLASTERS

APPLICATION FIELDS

RASOSTUK GYPS can be used on any type of plaster substrate on interior walls and ceilings in a minimum thickness of 1 mm to smooth off and of 5 mm as a single-layer plaster finish.

ADVANTAGES

- Elevata lavorabilità.
- Unico prodotto per rasature a spessore e finitura.
- Alta resa.
- Inerzia al fuoco.

METHOD OF USE

• SURFACE PREPARATION

There must be no films on the plaster substrate; scrape and remove if there are. Remove dust, loose and brittle parts, oil and dirt in general.

Wait for the substrate to dry completely before applying. On smooth concrete substrates, apply one coat of PRIMER U first.

• MIX PREPARATION

Mix RASOSTUK GYPS with water, as you would do to prepare scagliola. Pour the stated amount of water and add the product slowly until it has been completely absorbed and mix until smooth (1). Any unused product that has already started to set cannot be re-used.

• APPLICATION

Apply RASOSTUK GYPS manually using a stainless steel float (2), in continuous strokes back and fore, to obtain a flat and smooth finish. When applying more than one coat, leave the previous coat to start to set before applying another one, otherwise you could encounter problems of « peeling ».

If any parts of the substrate need to be grouted/filled-in, do this beforehand, using the same product.

• COVERAGE

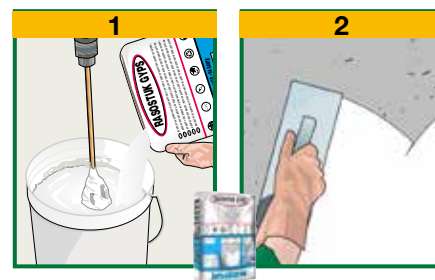
The coverage is approximately 1.0 kg/m²×mm.

• PRECAUTIONS

- Use cold water in summer and water at approximately 20°C in winter.
- Application temperature from +5°C to +35°C.
- Do not add water once the mix starts to set.
- Do not add any other materials such as cement, aggregates and additives.
- Do not wet the coats already applied on the surface.
- Air the room in cold and rainy weather to avoid a high level of humidity forming during the product curing phase.
- Before painting or applying other subsequent finishes, wait for the product to dry completely and apply an isolating fixative primer.
- On cement-based plaster, wait for it to dry

completely (minimum 20 days) to avoid possible negative reactions.

- Straight after application, clean the tools with water and the coated surfaces with a damp cloth.
- Do not expose the material to the sun in hot weather.
- Store in original closed packaging in a dry place.



TECHNICAL CHARACTERISTICS

	Standard	RASOSTUK GYPS
Appearance		Powder
Colour		White
Apparent density	EN 1015-6	0.65 ± 0.05 kg/L
Water mix ratio		75%
Water retention		>95%
Granulometry		0÷0.2 mm
Shelf life in original packaging (dry stored)		12 months
Mix properties and workability		
Density of mix		1.48 ± 0.05 kg/L
Pot life (*)		ca. 1 hour
Application temperature		+5°C ÷ +35°C
Minimum application thickness		1 mm
Application		Manual
Performance characteristics	Standard	Product performance
Class and Type	EN 13279-1	
Adhesion strength	EN 1542	≥0.3 MPa
Compression strength - after 7 days	EN 12190	≥4.0 N/mm²
Aqueous vapour diffusion coefficient	EN 1015-19	μ = 5
Thermal resistance - Operating temperature		-30°C ÷ +90°C
Reaction to fire Euroclass	EN 13501-1	A1

Test conditions: temperature 23±2°C, 50±5% R.H. and air velocity in test area <0.2 m/s. The data indicated may vary based on the specific conditions of the worksite: temperature, humidity, ventilation, porosity of the substrate.

(*) The times indicated will be longer or shorter as the temperature drops or rises.

Pursuant to European standard **EN 13279-1** - General principles for the use of products and systems.

the numerous possible uses and the possible interference of conditions or elements beyond our control, we assume no responsibility regarding the results which are obtained. The purchasers, of their own accord and under their own responsibility, must establish the suitability of the product for the envisaged use.

The figures shown are average indicative figures relevant to current production and may be changed or updated by INDEX at any time without previous warning. The advice and technical information provided, is what results from our best knowledge regarding the properties and the use of the product. Considering

PACKAGING

25-kg Sacks

• FOR ANY FURTHER INFORMATION OR ADVICE ON PARTICULAR APPLICATIONS, CONTACT OUR TECHNICAL OFFICE • IN ORDER TO CORRECTLY USE OUR PRODUCTS, REFER TO INDEX TECHNICAL SPECIFICATIONS •

 <p>Construction Systems and Products</p> <p>Via G. Rossini, 22 - 37060 Castel D'Azzano (VR) - Italy - C.P.67 T. +39 045 8546201 - F. +39 045 518390</p>	<p>Internet: www.index-spa.com Informazioni Tecniche Commerciali tecom@indexspa.it Amministrazione e Segreteria index@indexspa.it Index Export Dept. index.export@indexspa.it</p>		<p>TOTAL QUALITY Index</p>  <p>UNI EN ISO 9001</p>	<p>Environmental Management Systems index</p>  <p>UNI EN ISO 14001</p>	 <p>INDEX socio del GBC Italia</p>	
---	--	---	--	---	---	---