

# RASOSTUK EXTRA

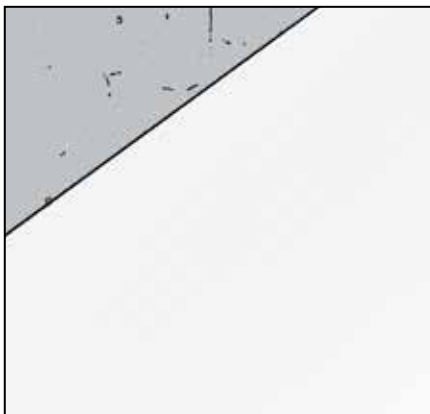
VERY FINE SMOOTHING COAT BASED ON LIME AND CEMENT,  
FOR SMOOTH FINISHING OF PLASTER AND CONCRETE

GRANTS *LEED* CREDITS

CHARACTERISTICS	ENVIRONMENTAL	METHOD OF USE		PRECAUTIONS
ALLOWS TO BREATHE	ECO GREEN	RECYCLABLE	MIX MECHANICALLY	APPLY BY INOX SPATULA
				STORAGE: IN A DRY PLACE

## PROBLEM

### VERY FINE MIRROR-LIKE SMOOTHING COATS



## SOLUTION

RASOSTUK EXTRA satisfies any aesthetic requirements to obtain mirror-like surfaces. RASOSTUK EXTRA is a pre-mixed powder based on lime and high-resistance white cement, fine selected aggregates and additives that improve its workability, adhesion and watertightness.

## APPLICATION FIELDS

RASOSTUK EXTRA is particularly suitable as a smoothing product for plaster, concrete, cement blocks and autoclaved aerated concrete for obtaining smooth and perfectly finished white surfaces. RASOSTUK EXTRA is therefore an excellent aesthetic solution to finish any concrete surface, for interior and exterior use. It can be finished-off with any paint type.



## ADVANTAGES

- High workability.
- Excellent level of white finish.
- High adhesion to surfaces.
- Mirror-like finish.

## METHOD OF USE

### • SURFACE PREPARATION

There are no special problems in preparing the surfaces that, in general, must be clean without any release agents, crumbling parts, dust and dirt.

Any joints, sealing and surface porosities can be filled with RASOSTUK at grout consistency.

### • MIX PREPARATION

Mix RASOSTUK EXTRA simply with with right quantity clean water (see table).

To mix the product, use a conventional mixing drill (1) taking care not to prolong mixing once a perfectly smooth paste is obtained.

### • APPLICATION

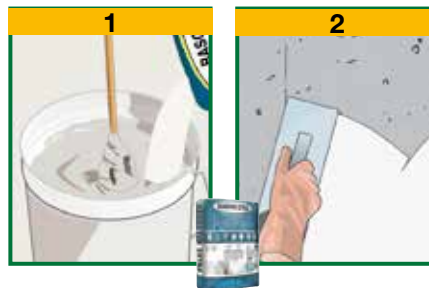
Apply the product using a stainless steel float, smoothing out to an even thickness (2). One or more coats can be applied, depending on the required finish.

### • CONSUMPTION

The yield is approximately 1.0 kg/m<sup>2</sup>.

### • PRECAUTIONS

- Use cold water in summer and water at 20°C in winter.
- Application temperature from +5°C to +35°C.
- Do not add water once the mix starts to set.
- Do not add any other materials such as cement, aggregates and additives.
- Do not let the product dry too quickly in hot weather.
- Straight after application clean the tools with water and the coated surfaces with a damp cloth.
- Do not expose the material to the sun in hot weather.
- Store in original closed packaging in a dry place.



## TECHNICAL CHARACTERISTICS

	Standard	<b>RASOSTUK EXTRA</b>
Appearance		Powder
Colour		White
Particle size		0.04 mm
Apparent density	<b>EN 1015-6</b>	0.92 ± 0.05 kg/L
Mixing water		39% ± 1%
Storage in original packaging in a dry place		12 months
<b>Mix properties and workability</b>		
Density of the mix		1.65 ± 0.10 kg/L
pH mix		approx 12
Workable mix duration (*)		approx 2 hours
Application temperature		+5°C ÷ +35°C
Minimum application thickness		0.1 mm
Maximum application thickness per layer		2 mm
Application		Manual or mechanical
<b>Performance characteristics</b>		
<b>Class and type</b>	<b>Standards</b>	<b>Product performance</b>
<b>Resistance to compression - after 28 days</b>	<b>EN 998-1</b>	<b>GP</b>
<b>Resistance to bending - after 28 days</b>	<b>EN 1015-11</b>	≥6.0 N/mm <sup>2</sup> - CS IV
<b>Adhesion to substrate</b>	<b>EN 1015-11</b>	≥2.0 N/mm <sup>2</sup>
<b>Water absorption through capillarity</b>	<b>EN 1015-12</b>	≥0.5 N/mm <sup>2</sup> - FP: B
<b>Water vapour permeability coefficient</b>	<b>EN 1015-18</b>	W0
<b>Thermal conductivity λ<sub>-10,dry</sub></b>	<b>EN 1015-19</b>	μ ≤ 20
<b>Durability</b>	<b>EN 1745 A.12</b>	0.35 W/mK
Thermal resistance - Working temperature	<b>EN 998-1</b>	5.2.3.2 compliant
<b>Reaction to fire</b>		-30°C ÷ +90°C
<b>Hazardous substances</b>	<b>EN 13501-1</b>	A1 - 5.2.2 compliant
	<b>EN 998-1</b>	According note in ZA.1

Test conditions: temperature 23±2°C, R.H. 50±5% and air speed in test area <0.2 m/s. **The data shown may vary depending on the specific work site conditions: temperature, humidity, ventilation, absorbency of the base coat.**

(\*) The times indicated will be longer or shorter as the temperature drops or rises.

Compliant with the general principles defined in **EN 1504-9** - Principles for evaluating the use of products and systems.

the numerous possible uses and the possible interference of conditions or elements beyond our control, we assume no responsibility regarding the results which are obtained. The purchasers, of their own accord and under their own responsibility, must establish the suitability of the product for the envisaged use.

The figures shown are average indicative figures relevant to current production and may be changed or updated by INDEX at any time without previous warning. The advice and technical information provided, is what results from our best knowledge regarding the properties and the use of the product. Considering

## PACKAGING

15-kg Sacks

• FOR ANY FURTHER INFORMATION OR ADVICE ON PARTICULAR APPLICATIONS, CONTACT OUR TECHNICAL OFFICE • IN ORDER TO CORRECTLY USE OUR PRODUCTS, REFER TO INDEX TECHNICAL SPECIFICATIONS •

 <b>Construction Systems and Products</b> Via G. Rossini, 22 - 37060 Castel D'Azzano (VR) - Italy - C.P.67 T. +39 045 8546201 - F. +39 045 518390	Internet: <a href="http://www.index-spa.com">www.index-spa.com</a> Informazioni Tecniche Commerciali <a href="mailto:tecom@indexspa.it">tecom@indexspa.it</a> Amministrazione e Segreteria <a href="mailto:index@indexspa.it">index@indexspa.it</a> Index Export Dept. <a href="mailto:index.export@indexspa.it">index.export@indexspa.it</a>		 UNI EN ISO <b>9001</b>	 UNI EN ISO <b>14001</b>	 "GBC Italia" Associated	
---	---	---	---	---	--	---