

RASOGESSO

LIME AND GYPSUM BASED RENDER COAT
FOR SMOOTH INTERIOR FINISHES

GRANTS *LEED* CREDITS

CHARACTERISTICS	ENVIRONMENTAL	METHOD OF USE		PRECAUTIONS
 ALLOWS TO BREATHE	 ECO GREEN	 RECYCLABLE	 MIX MECHANICALLY	 APPLY BY INOX SPATULA STORAGE: IN A DRY PLACE

PROBLEM

FINE INTERIOR FINISHES



SOLUTION

RASOGESSO can be used on walls and ceilings on any type of seasoned gypsum or cement lime-based plaster substrate. It is a premixed product with base of calcium sulphate hemihydrate, hydrated lime and selected calcium carbonate and additives that ensure smooth and mirror finishes. It is easy to work and quick to apply.

APPLICATION FIELDS

RASOGESSO may be used on any type of interior wall or ceiling plaster, for a smooth, mirror finish. It can also be used as a render coat on plasterboard.

ADVANTAGES

- High workability
- Mirror smooth finish.
- High coverage.
- Inert to fire.



METHOD OF USE

• SURFACE PREPARATION

There must be no films on the plaster substrate; scrape and remove if there are. Remove dust, loose and brittle parts, oil and dirt in general.

Wait for the substrate to dry completely before applying. On smooth concrete substrates, apply one coat of PRIMER U first.

• MIX PREPARATION

Mix **RASOGESSO** with water, as you would do to prepare scagliola. Pour the water and feed the product in until it is completely absorbed, so that an even consistency is obtained, then mix (1). Any unused product that has already started to set cannot be re-used.

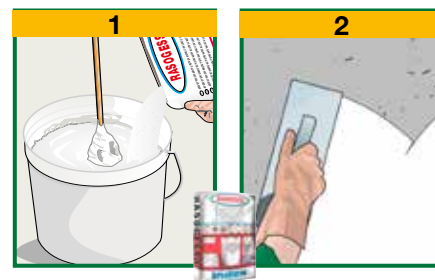
• APPLICATION

Apply **RASOGESSO** manually using a stainless steel float (2), in continuous strokes back and fore, to obtain a flat and smooth finish. When applying more than one coat, leave the previous coat to dry completely before applying another one, otherwise you could encounter problems of « peeling ». If any parts of the substrate need to be grouted/ filled-in, do this beforehand, using the same product.

• COVERAGE

About 1.0 kg/m² per mm thickness.

• PRECAUTIONS



TECHNICAL CHARACTERISTICS

		RASOGESSO
	Standard	
Appearance		Powder
Colour		White
Apparent density	EN 1015-6	0.65 ± 0.05 kg/L
Water mix ratio		50% ±5%
Water retention		>95%
Granulometry		0 to 0.2 mm
Shelf life in original packaging (dry stored)		12 months
Mix properties and workability		
Density of the mix		1.55 ± 0.05 kg/L
Pot life (*)		about 1 hour
Application temperature		+5°C to +35°C
Application		Manual
Performance characteristics	Standard	Product performance
Class and type	EN 13279-1	B3/20/2
Adhesion strength	EN 1542	≥0.3 MPa
Compression strength - after 7 days	EN 12190	≥5.0 N/mm ²
Aqueous vapour diffusion coefficient	EN 1015-19	μ = 8
Thermal resistance - Operating temperature		-30°C to +90°C
Reaction to fire Euroclass	EN 13501-1	A1

Test conditions: temperature 23±2°C, 50±5% R.H. and air velocity in test area <0.2 m/s. The data indicated may vary based on the specific conditions of the worksite: temperature, humidity, ventilation, porosity of the substrate.

(*) The times indicated will be longer or shorter as the temperature drops or rises.

Pursuant to European standard **EN 13279-1** - General principles for the use of products and systems.

the numerous possible uses and the possible interference of conditions or elements beyond our control, we assume no responsibility regarding the results which are obtained. The purchasers, of their own accord and under their own responsibility, must establish the suitability of the product for the envisaged use.

The figures shown are average indicative figures relevant to current production and may be changed or updated by INDEX at any time without previous warning. The advice and technical information provided, is what results from our best knowledge regarding the properties and the use of the product. Considering

PACKAGING

25-kg-Sacks

• FOR ANY FURTHER INFORMATION OR ADVICE ON PARTICULAR APPLICATIONS, CONTACT OUR TECHNICAL OFFICE • IN ORDER TO CORRECTLY USE OUR PRODUCTS, REFER TO INDEX TECHNICAL SPECIFICATIONS •

 Construction Systems and Products Via G. Rossini, 22 - 37060 Castel D'Azzano (VR) - Italy - C.P.67 T. +39 045 8546201 - F. +39 045 518390	Internet: www.index-spa.com Informazioni Tecniche Commerciali tecom@indexspa.it Amministrazione e Segreteria index@indexspa.it Index Export Dept. index.export@indexspa.it		 UNI EN ISO 9001	 UNI EN ISO 14001	 "GBC Italia" Associated	
---	---	---	---	---	--	---