

RASOFINE

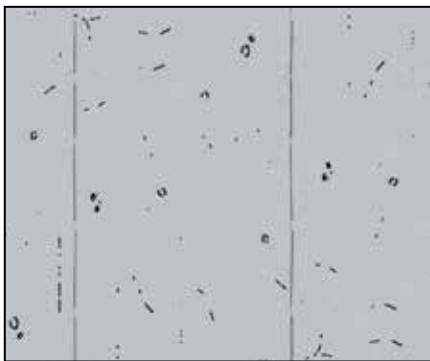
FINE GRAIN SKIMMING PRODUCT FOR LEVELLING WALLS, PLASTER AND CONCRETE AND FILLING POROUS SURFACES

GRANTS *LEED* CREDITS

CHARACTERISTICS			ENVIRONMENTAL	METHOD OF USE					PRECAUTIONS
ONE-COMPONENT	WATER BASED	ALLOWS TO BREATHE	ECO GREEN	RECYCLABLE	MIX MECHANICALLY	APPLY BY TOOTHED SPATULA	APPLY BY TROWEL	APPLY BY INOX SPATULA	STORAGE: IN A DRY PLACE

PROBLEM

LEVELLING PLASTER AND CONCRETE



SOLUTION

RASOFINE is a pre-mixed plaster made of cement, selected mineral aggregates and additives that improve workability and adhesion. After setting, the product becomes a compact and resistant plaster.

APPLICATION FIELDS

RASOFINE is used for fine finishes on all common substrates made of concrete, cement or lime mortar or cement materials, expanded cement, cellular concrete, etc. both indoors and outdoors. It is used to smooth down uneven or damaged plaster and for small repair work.



ADVANTAGES

- High workability.
- Excellent adhesion on the most common substrates.

METHOD OF USE

• PREPARING THE SUBSTRATE

The substrate must be compact and well clean, free of dust, loose or crumbling parts, old paint, etc. In the case of highly absorbent substrates we recommend wetting the surface before application.



Gypsum substrates must be pre-treated with ISOLFIX G or PRIMER FIX primer.

• PREPARING THE MIX

RASOFINE is ready to use and should be mixed only with 21% of clean water (1). Use a mixer on a drill running at a slow speed to mix the product. Avoid prolonging this operation beyond what is necessary.

• APPLICATION

Apply the product with a stainless steel spatula (2) skimming it uniformly until you reach the desired thickness. You can apply one or more coats depending on the finish desired. On normal surfaces the skimming can reach a thickness of 1-2 mm.

• CONSUMPTION

About 1.4 kg/m²/per mm thickness.

• PRECAUTIONS

- Use cold water in summer and water at 20°C in winter.
- Application temperature from +5°C to +35°C.
- Do not add water once the mix has started to set.
- Do not add any other materials such as cement, aggregates and additives.
- In hot weather, keep damping the finished mortar surface for at least 24 hours to stop it from drying out too quickly.
- Do not apply on smooth surfaces.
- Straight after application clean the tools with water and the coated surfaces with a damp cloth.
- Do not expose the material to the sun in hot weather.
- Store in original closed packaging in a dry place.

TECHNICAL CHARACTERISTICS

		RASOFINE
	Standard	
Appearance		Powder
Colour		White Grey
Particle size		0 to 0.4 mm
Apparent density	EN 1015-6	1.40 ± 0.10 kg/L
Mix water		21% ± 1%
Storage in original packaging in a dry place		12 months
Mix properties and workability		
Density of mix		1.80 ± 0.10 kg/L
pH of mix		about 12
Workable mix duration (*)		about 2 hours
Application temperature		+5°C to +35°C
Minimum application thickness		1.0 mm
Maximum application thickness		2.0 mm
Application		Manual or mechanical
Performance characteristics		
Class and type	Standard	Product performance
Class and type	EN 1504-3	R1 - PCC
Compression strength - after 28 days	EN 12190	≥10 MPa
Bending strength - after 28 days	EN 196-1	≥3 MPa
Chloride ion content	EN 1015-17	Absent
Bond strength	EN 1542	≥0.8 MPa
Thermal compatibility with frost-thaw cycles - Part 1	EN 13687-1	≥0.8 MPa
Water absorption by capillarity	EN 13057	$w \leq 0.5 \text{ kg/m}^2\cdot\text{h}^{0.5} - W1$
Permeability to water vapour	EN 1015-19	$\mu = 15$
Thermal resistance - Operating temperature		-30°C to +90°C
Fire reaction	EN 13501-1	A1
Hazardous substances	EN 1504-3	In accordance with note in ZA.1

Test conditions: temperature 23±2°C, RH 50±5% and air speed in test area <0.2 m/s. **The data shown may vary depending on the specific work site conditions: temperature, humidity, ventilation, absorbcency of the base coat.**

(*) The times indicated will be longer or shorter as the temperature drops or rises.

Compliant with the general principles defined in **EN 1504-3** - Principles for evaluating the use of products and systems.

the numerous possible uses and the possible interference of conditions or elements beyond our control, we assume no responsibility regarding the results which are obtained. The purchasers, of their own accord and under their own responsibility, must establish the suitability of the product for the envisaged use.

The figures shown are average indicative figures relevant to current production and may be changed or updated by INDEX at any time without previous warning. The advice and technical information provided, is what results from our best knowledge regarding the properties and the use of the product. Considering

PACKAGING

25-kg Sack

• FOR ANY FURTHER INFORMATION OR ADVICE ON PARTICULAR APPLICATIONS, CONTACT OUR TECHNICAL OFFICE • IN ORDER TO CORRECTLY USE OUR PRODUCTS, REFER TO INDEX TECHNICAL SPECIFICATIONS •

<p>Construction Systems and Products</p> <p>Via G. Rossini, 22 - 37060 Castel D'Azzano (VR) - Italy - C.P.67 T. +39 045 8546201 - F. +39 045 518390</p>	<p>Internet: www.index-spa.com Informazioni Tecniche Commerciali tecom@indexspa.it Amministrazione e Segreteria index@indexspa.it Index Export Dept. index.export@indexspa.it</p>					
--	--	--	--	--	--	--