

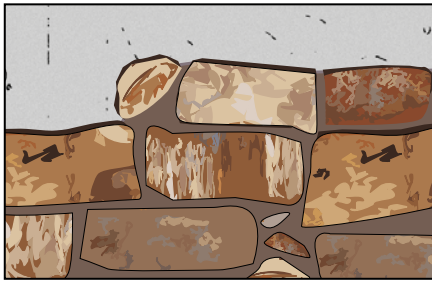
PETRABOND

NON-SLIP, HIGH-ADHESION SPECIAL ADHESIVE
FOR RECONSTITUTED STONE BASED ON HYDRAULIC BINDERS
FOR LAYING CERAMIC TILES AND HEAVY STONE TILES,
FOR INTERIOR AND EXTERIOR USE

GRANTS *LEED* CREDITS

CHARACTERISTICS	ENVIRONMENTAL	METHOD OF USE			PRECAUTIONS	
ONE-COMPONENT	ECO GREEN	RECYCLABLE	MIX MECHANICALLY	APPLY BY INOX SPATULA	APPLY BY TOOTHED SPATULA	STORAGE: IN A DRY PLACE

AVOIDING VERTICAL SLIDING EVEN WITH HEAVY TILES



When laying tiles that are heavier than normal on vertical applications you need to use adhesives that are easy to work, have an excellent resistance to sliding and secure final adhesion.

Description

PETRABOND is a premixed powder adhesive made of hydraulic bonding agents, prime quartz sands, special powder resins that increase adhesion and resistance and additives that guarantee high thixotropic and workability levels so that even rather heavy tiles do not slip.



Application Fields

PETRABOND is used to glue ceramic, clinker, porcelain stoneware and reconstructed stone tiles, **indoors and outdoors**, to all types of foundations normally used in building sites. It is used universally **on floors, walls and ceilings** for gluing in thin layers.



Advantages

- Excellent adhesion to various laying surfaces.
- Excellent resistance to sliding.

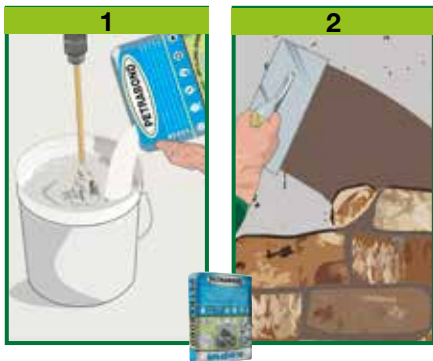
Method of use

• SURFACE PREPARATION

The laying surfaces must be solid and flat, without inconsistent parts, grease, oil, dust or dirt in general. Laying surfaces in plaster must be consistent, dry and treated with ISOLFIX G primer before applying PETRABOND.

• MIX PREPARATION

PETRABOND is prepared by mixing the product with right quantity clean water (see table). Pour the powder product into the water and mix with a drill on low speed until a uniform paste is obtained with no lumps (1). Leave the paste to rest for 3 minutes and mix again. The mix stays in workable condition for about 6 hours depending on weather conditions.



• APPLICATION

PETRABOND is applied using a smooth or toothed inox trowel, depending on the type of tile involved (2).

When laying very heavy stone wall tiles, it is advisable to apply a layer of approximately 4-mm on the wall using a smooth inox trowel and also on the back of the stone tile to ensure total adhesion and zero slippage. In exterior applications, it is advisable to apply over the back of the tiles so that no cavities are left, which could be the possible cause for infiltrations and damages due to rainwater.

When laying the tiles, press down on them sufficiently to make sure they come into full contact with the adhesive.

• CONSUMPTION

From 4 to 5 kg/m² based on the size of the tiles.

• PRECAUTIONS

- Don't use on surfaces made of metal, rubber, vinyl floors, wood, linoleum or PVC.
- In case of marble or composite stones particularly sensitive to water, we suggest you to consult our technical office.
- If the back of the tiles are very dusty, it is recommended to clean them by dipping

them quickly in water.

- In adverse weather conditions (high temperatures, wind) the normal open time may be shorter. Therefore you must make sure the adhesive has not formed a "skin" before laying the tile, which would compromise adhesion. If a "skin" has formed on the surface, simply refresh the adhesive by crossing again with the toothed trowel without wetting.
- In high temperatures wetting the foundation helps to increase the open time.
- Never use with temperatures below +5°C and high than +35°C. Protect tiles from rain, frost and high temperature for 24 hours at least.
- In hot weather avoid laying the adhesive on large surface areas.
- Glue uniformly.

(See following)

Display on your smartphone the application instruction video



index

A SIKA COMPANY



5th DIVISION

TECHNICAL CHARACTERISTICS

		PETRABOND	
	Standard		
Appearance		Powder	
Colour		Grey	
Apparent density	EN 1015-6	1.30 ± 0.05 kg/L	
Water ratio		37% ± 1% (7,75 L)	
Shelf life in original packaging (dry stored)		12 months	
Mix characteristics and workability			
Density of mix		1.60 ± 0.05 kg/L	
Mix pH		12-14	
Pot life (*)		approx 6 hours	
Application temperature		+5°C ÷ +35°C	
Open time (*)		20 minutes	
Adjustability time (*)		30 minutes	
Waiting time - before foot traffic use (*)		48 hours	
Waiting time - before grouting (*)		48 hours	
Caratteristiche prestazionali	Standard	Minimun requirement	Product performance
Class and type	EN 12004		C2TE
Adhesion strength	EN 1348 P8.2	≥1.00 N/mm ²	1.50 N/mm ²
Adhesion strength - after immersion in water	EN 1348 P8.3	≥1.00 N/mm ²	1.10 N/mm ²
Adhesion strength - after heat	EN 1348 P8.4	≥1.00 N/mm ²	1.50 N/mm ²
Adhesion strength - after thaw-frost cycles	EN 1348 P8.5	≥1.00 N/mm ²	1.00 N/mm ²
Open time: adhesion strenght - after 30'	EN 1346	≥0.50 N/mm ²	1.00 N/mm ²
Sliding	EN 1308	≤0.5 mm	0 mm
Thermal resistance - Operating temperature			-30°C ÷ +90°C
Fire reaction	EN 13501-1		E CWFT P4.4.3
Hazardous substances	EN 12004		in accordance to ZA.1 note

Test conditions: temperature 23±2°C, 50±5% R.H. and air velocity in test area <0.2 m/s. **These data may change depending on specific site conditions: temperature, ventilation, moisture and substrate absorbency.** (*) The times indicated will be longer or shorter as the temperature drops or rises.

(*) The times indicated will be longer or shorter as the temperature drops or rises.

Pursuant to European standard EN 12004:2007+A1:2012 - General principles for the use of products and systems.

(See previous)

- Damp surfaces can slow the setting of the product.
- When overlaying, the surfaces must be washed well with water and caustic soda (9:1).
- Clean the tools with water and the covered surfaces with a damp cloth immediately after use.
- Do not expose the material to direct sunlight in hot weather.
- Store the original closed packaging in a dry place.

the numerous possible uses and the possible interference of conditions or elements beyond our control, we assume no responsibility regarding the results which are obtained. The purchasers, of their own accord and under their own responsibility, must establish the suitability of the product for the envisaged use.

Packaging

25-kg Sacks

The figures shown are average indicative figures relevant to current production and may be changed or updated by INDEX at any time without previous warning. The advice and technical information provided, is what results from our best knowledge regarding the properties and the use of the product. Considering

• FOR ANY FURTHER INFORMATION OR ADVICE ON PARTICULAR APPLICATIONS, CONTACT OUR TECHNICAL OFFICE • IN ORDER TO CORRECTLY USE OUR PRODUCTS, REFER TO INDEX TECHNICAL SPECIFICATIONS •

 A SIKA COMPANY INDEX Construction Systems and Products S.p.A. Via G. Rossini, 22 - 37060 Castel D'Azzano (VR) - T. +39 045 8546201 - Fax +39 045 518390	www.indexspa.it Informazioni Tecniche Commerciali tecom@indexspa.it Amministrazione e Segreteria index@indexspa.it Index Export Dept. index.export@indexspa.it					
	9/2023 10/9/2023 © INDEX					