

LIQUID PROTEX

BITUMEN-BASED WATERPROOFING PROTECTIVE PAINT

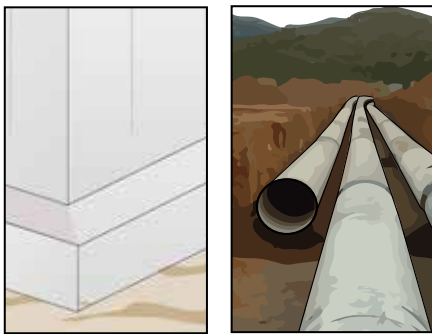


GRANTS *LEED* CREDITS

CHARACTERISTICS			ENVIRONMENTAL	METHOD OF USE				PRECAUTIONS
ONE-COMPONENT	SOLVENT BASED	WATERPROOF	ECO GREEN	MIX MECHANICALLY	SPRAY APPLICATION	APPLY BY BRUSH	APPLY BY ROLLER	

PROBLEM

WATERPROOFING METAL SURFACES AND UNDERGROUND STRUCTURES



SOLUTION

LIQUID PROTEX is a quick-drying glossy waterproofing protective paint. Thanks to its waterproof properties and resistance to chemical and atmospheric agents, it can be used in numerous civil, industrial and ship-building applications.

APPLICATION FIELDS

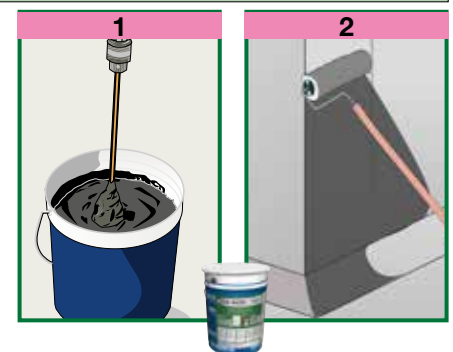
LIQUID PROTEX is used to protect gutters, pipes, tanks, poles, trellises, structural work, channels, scaffolding and metal structures in general. It is used as a waterproofing product to protect against humidity and damp and corrosive agents in the air and soil, in foundation walls, in underground tanks, in drain conduits, septic tanks and sewers.

METHOD OF USE

It can be applied with a roller, paintbrush and with common airless paint sprayers, taking care to mix the product well before use. If the product is too thick, it can be diluted using the primer INDEVER - Index. It is important for surfaces to be dry and free from oil and dusty powder before application. The drying time depends on the porosity of the surface, the applied thickness and the temperature.

• COVERAGE

The yield varies from 150 to 300 ml/m²×coat.



Bituminous liquid waterproofing

L

TECHNICAL CHARACTERISTICS

	Standard	LIQUID PROTEX
Appearance		Liquid
Colour		Black
Density	EN 2811-1	0.96 ± 0.04 kg/L
Dry residue - at 130°C	UNI EN ISO 3251	63 ± 4%
pH - at 20°C		Neutral
Viscosity - nozzle 4 - at 25°C	DIN 53211	56" – 74"
Flammability point - closed container	ASTM D 3828-87	> +23°C
Storage in original packaging in a dry place		24 months
Workability characteristics		
Waiting time - for dust-free drying (*)		approx 30 ÷ 60 minutes
Waiting time - till tack-free drying (*)		approx 100 ÷ 140 minutes
Application temperature		+5°C ÷ +35°C
Application		manual or spray
Performance characteristics		
Product performance		
Fraass breaking point		-10 °C
Dow penetration - at 25° C		10/20 dmm
Softening point		100 ± 5°C
Self-Flammability		>200°C
Thermal resistance - Working temperature		-30°C ÷ +90°C

Test conditions: temperature 23±2°C, 50±5% R.H. and air velocity in test area <0.2 m/s. **These parameters may vary based on the specific conditions of the worksite: temperature, humidity, ventilation, porosity of the substrate.**

(*) The stated times may be longer or shorter as the temperature decreases or increases.

the numerous possible uses and the possible interference of conditions or elements beyond our control, we assume no responsibility regarding the results which are obtained. The purchasers, of their own accord and under their own responsibility, must establish the suitability of the product for the envisaged use.

The figures shown are average indicative figures relevant to current production and may be changed or updated by INDEX at any time without previous warning. The advice and technical information provided, is what results from our best knowledge regarding the properties and the use of the product. Considering

PACKAGING

20-litres-Pail
4-litres-Pail
0.75-litres-Can

• FOR ANY FURTHER INFORMATION OR ADVICE ON PARTICULAR APPLICATIONS, CONTACT OUR TECHNICAL OFFICE • IN ORDER TO CORRECTLY USE OUR PRODUCTS, REFER TO INDEX TECHNICAL SPECIFICATIONS •

 Construction Systems and Products Via G. Rossini, 22 - 37060 Castel D'Azzano (VR) - Italy - C.P.67 T. +39 045 8546201 - F +39 045 518390	Internet: www.index-spa.com Informazioni Tecniche Commerciali tecom@indexspa.it Amministrazione e Segreteria index@indexspa.it Index Export Dept. index.export@indexspa.it		 UNI EN ISO 9001	 UNI EN ISO 14001	 socio del GBC Italia	
			© INDEX			