

INTOPLAN

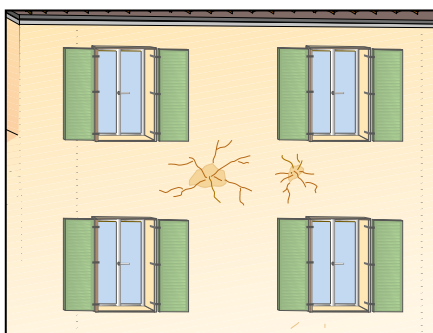
TRANSPIRING FIBRE-REINFORCED PLASTER BASED ON LIME AND HYDRAULIC BINDERS, FOR EXTERIOR AND INTERIOR APPLICATION

GRANTS *LEED* CREDITS

CHARACTERISTICS	ENVIRONMENTAL	METHOD OF USE			PRECAUTIONS	
DAMP-PROOFING	ECO GREEN	RECYCLABLE	MIX MECHANICALLY	SPRAY APPLICATION	APPLY BY TROWEL	STORAGE: IN A DRY PLACE

PROBLEM

PLASTERING FACADES WITH POTENTIAL MICRO-CRACKS



SOLUTION

INTOPLAN is a pre-mixed plaster formulated with lime, cement, selected aggregates and additives capable of bestowing a high degree of workability and breathability.

APPLICATION FIELDS

INTOPLAN is suitable for plastering indoor and outdoor walls made of bricks, stone and cellular concrete, tuff, mixed masonry substrates, etc. that require excellent breathability.



ADVANTAGES

- High workability
- Excellent breathability.

METHOD OF USE

• SURFACE PREPARATION

Remove all loose and flaking material, oils, release agents, dust and dirt in general by tapping, brushing and washing the surface with water.

Fill any cavities with brick fragments and cement-lime mortar. Apply a cement-lime render coat additivated with COLLASEAL (1). Cellular concrete surfaces must be wetted with water until saturated prior to applying the render coat.

Plaster the surface with INTOPLAN 24 hours after applying the partial anchoring render coat.

• PREPARING THE MIX

INTOPLAN must be mixed only with clean water (2). The mixing time when using a cement mixer should not exceed 3 minutes.

• APPLICATION

Apply one or more coats of INTOPLAN within one hour after mixing up to the optimal thickness (3).

The INTOPLAN mortar can also be applied – besides using a trowel – with automatic spraying machines, such as PFT or Turbosol. No special precautions are required for its application beyond those normally observed when using normal plaster.

Thanks to its high workability time, INTOPLAN can be laid on any architectural solution. Recently plastered surfaces, especially during the hot season, must be kept moist with nebulised water to avoid crazing.

During the cold season, fresh plaster should be adequately protected against frost. Cracks and holes in the masonry must be filled in beforehand; in order to preserve the verticality of the walls, it is advisable to fix angle beads to the corners and vertical guides to the walls.

• FINISHES

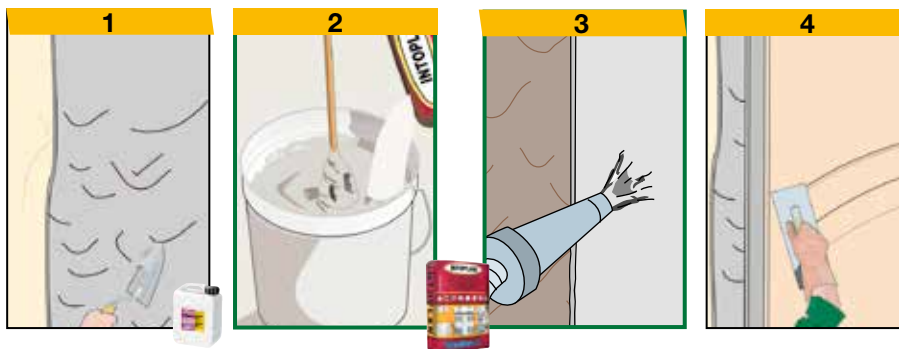
For painting purposes, it is advisable to use highly breathable lime-, silicate- or siloxane-

based wall paints, such as BioCALCECOLOR or SILICOLOR, or decorative mineral coatings such as DECORFINE (4).

• COVERAGE

Consumption hovers around 14 kg/m² per cm of thickness.

(See following)



TECHNICAL CHARACTERISTICS

	Standard	INTOPLAN
Appearance		Powder
Colour		Grey
Particle size		0÷1.3 mm
Apparent density	EN 1015-6	1.45 ± 0.05 kg/L
Mixing water		18% ± 1%
Storage in original packaging in a dry place		12 months
Mix properties and workability		
Density of the mix		1.75 ± 0.05 kg/L
Application temperature		+5°C ÷ +35°C
Minimum application thickness		8.0 mm
Maximum application thickness per layer		20.0 mm
Application		Manual or mechanical
Performance characteristics	Standards	Product performance
Class and type	EN 998-1	GP
Resistance to compression - after 28 days	EN 1015-11	5.0 N/mm ² - CS II
Resistance to bending - after 28 days	EN 1015-11	2.8 N/mm ²
Adhesion to substrate	EN 1015-12	≥0.5 N/mm ² - FP: A
Water absorption through capillarity	EN 1015-18	W0
Water vapour permeability coefficient	EN 1015-19	μ = 12
Thermal conductivity λ _{10,dry}	EN 1745 A.12	0.76 W/mK
Durability	EN 998-1	5.2.3.2 compliant
Thermal resistance - Working temperature		-30°C ÷ +90°C
Reaction to fire	EN 13501-1	A1
Hazardous substances	EN 998-1	According note in ZA.1

Test conditions: temperature 23±2°C, 50±5% R.H. and air velocity in test area <0.2 m/s. **These parameters may vary based on the specific conditions of the worksite: temperature, humidity, ventilation, porosity of the substrate.**

(*) The stated times may be longer or shorter as the temperature decreases or increases.

Compliant with the general principles defined in **EN 998-1** - Principles for evaluation of the use of products and systems.

(See previous)

• PRECAUTIONS

- Use cold water in the summer and water at 20°C in the winter.
- Application temperature from +5°C to +35°C.
- Do not add other materials such as bonding agents, aggregates or additives.
- In hot weather, keep the surface of the laid mortar wet, preventing the product from drying out quickly, for at least 8 hours.
- Wet the surfaces in high temperatures.
- Do not add water when the mix starts to set.
- Avoid sudden temperature changes while the plaster is setting.
- Joints between different elements must be reinforced with special fibreglass mesh, **RETINVETRO PER INTONACI**, which should be embedded in the last layer of plaster.
- For application on smooth or poorly absorbent surfaces, always apply bonding render and check that it adheres properly.
- Store in original closed packaging in a dry place. Protect against frost and high temperatures.

PACKAGING

INTOPLAN
25-kg Sack

• FOR ANY FURTHER INFORMATION OR ADVICE ON PARTICULAR APPLICATIONS, CONTACT OUR TECHNICAL OFFICE • IN ORDER TO CORRECTLY USE OUR PRODUCTS, REFER TO INDEX TECHNICAL SPECIFICATIONS •

 <p>index Construction Systems and Products</p> <p>Via G. Rossini, 22 - 37060 Castel D'Azzano (VR) - Italy - C.P.67 T. +39 045 8546201 - F. +39 045 518390</p>	<p>Internet: www.index-spa.com Informazioni Tecniche Commerciali tecom@indexspa.it Amministrazione e Segreteria index@indexspa.it Index Export Dept. index.export@indexspa.it</p>		 <p>TOTAL QUALITY index UNI EN ISO 9001</p>	 <p>Environmental Management Systems index UNI EN ISO 14001</p>	 <p>index socio del GBC Italia</p>	
--	--	---	---	--	--	---