



FASTCEM

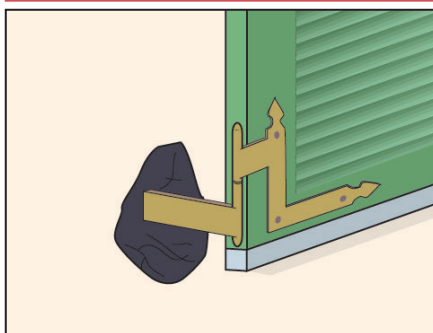
QUICK SETTING CEMENT MORTAR FOR QUICK FIXING

GRANTS **LEED** CREDITS

CHARACTERISTICS	ENVIRONMENTAL		METHOD OF USE		PRECAUTIONS
					
	ECO GREEN	RECYCLABLE	APPLY BY INOX SPATULA	APPLY BY TROWEL	STORAGE: IN A DRY PLACE

PROBLEM

FIX CONSTRUCTION DETAILS QUICKLY



In normal building site work, or for small jobs where a quick solution is required, problems regarding different elements often arise (shanks, pipes, pintles, frames, boxes, manholes, etc.) with the need for fast application in order to avoid wasting time, inconvenience and to overcome application difficulties.

SOLUTION

FASTCEM is a premixed dry mortar. The product is ready to use, shrinkage compensated and has fast setting and hardening times. The highly thixotropic qualities allow thick vertical applications without using moulds. The fast setting time gives **FASTCEM** a high mechanical resistance after only 3 hours, with no shrinkage. Furthermore, **FASTCEM** is highly impermeable to water.

APPLICATION FIELDS

FASTCEM is particularly suitable for fixings such as: manholes, frames, boxes for electrical installations, shanks, pipes, pintles, plugs, sanitary fittings, sealing cement conduits, tanks, cracks with water infiltrations and water seepages in underground rooms.

ADVANTAGES

- High workability for a wide variety of building applications and D.I.Y.
- Simple and practical to use thanks to the ready to use formulation which eliminates any site errors.
- Fast application thanks to the rapid setting properties.
- Highly thixotropic and shrinkage compensated which makes application easier without using formworks and without the problems of cracking.

METHOD OF USE

• SURFACE PREPARATION

The substrate must be prepared to guarantee the best adhesion of **FASTCEM** mortar by creating the appropriate fixing holes. It is necessary to remove any loose particles, dust, release agents and dirt in general. The surface should be wetted with water without creating a surface veil of water which can be removed using a sponge.

• PREPARAZIONE DELL'IMPASTO

FASTCEM is ready to use. Just mix with 20% clean water (1).

Due to the rapid hardening of the product, we recommend preparing only the amount of mortar necessary for the work.

Bear in mind that the water is an important part of the mortar and should be added in the recommended quantities so as not to compromise some of the properties of the product such as mechanical resistance and shrinkage, etc.

• APPLICATION

The product should be applied with a trowel or stainless steel spatula without using formworks (2).

• COVERAGE

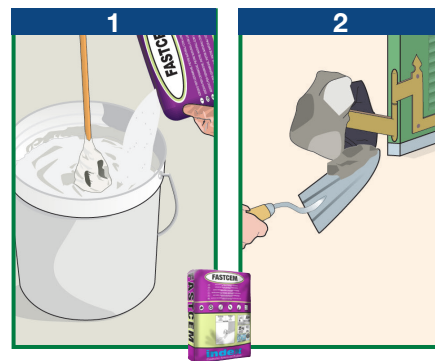
Approx 1,8 kg/litre.

• PRECAUTIONS

- Use cold water during the summer months and water at roughly 20°C during winter.
- Application temperature from +5°C to +35°C.
- Do not add water once the mix starts to set.
- Do not add other materials, such as cement, aggregates or additives.
- In hot weather, keep dampening the finished mortar surface for at least 24 hours.
- Do not apply on smooth surfaces.
- Clean tools with water and the coated

surfaces with a damp cloth right after application.

- Do not expose the material to direct sunlight in hot weather.
- Store the original closed packaging in a dry place.



TECHNICAL CHARACTERISTICS

	Standard	FASTCEM
Appearance		Powder
Colour		Grey
Apparent density		1.25 ± 0.10 kg/ℓ
Water mix ratio		20% ± 1%
Storage in original packaging in a dry place		12 months
Caratteristiche dell'impasto e di lavorabilità	Standard	
Density of the mix	EN 1015-6	1.85 ± 0.10 kg/ℓ
Setting time (*)		3 minutes
Application temperature		+5°C ÷ +35°C
Application		Manual
Performance characteristics	Standard	Product performance
Adhesion strength - after 28 days	EN 12190	18.0 N/mm²
Adhesion strength - after 24 hours	EN 12190	18.0 N/mm²
Adhesion strength - after 28 days	EN 196-1	4.0 N/mm²
Adhesion strength - after 24 hours	EN 196-1	4.0 N/mm²
Thermal resistance - Working temperature		-30°C ÷ +90°C
Fire reaction	EN 13501-1	A1

Test conditions: temperature 23±2°C, 50±5% R.H. and air velocity in test area <0.2 m/s. **These data may change depending on specific site conditions: temperature, ventilation, moisture and substrate absorbency.**

(*) The times indicated will be longer or shorter as the temperature drops or rises.

the numerous possible uses and the possible interference of conditions or elements beyond our control, we assume no responsibility regarding the results which are obtained. The purchasers, of their own accord and under their own responsibility, must establish the suitability of the product for the envisaged use.

The figures shown are average indicative figures relevant to current production and may be changed or updated by INDEX at any time without previous warning. The advice and technical information provided, is what results from our best knowledge regarding the properties and the use of the product. Considering

PACKAGING

FASTCEM

25-kg Sack.

5-kg Bag in boxes of 5 bags

• FOR ANY FURTHER INFORMATION OR ADVICE ON PARTICULAR APPLICATIONS, CONTACT OUR TECHNICAL OFFICE • IN ORDER TO CORRECTLY USE OUR PRODUCTS, REFER TO INDEX TECHNICAL SPECIFICATIONS •

index
Construction Systems and Products

Via G. Rossini, 22 - 37060 Castel D'Azzano (VR) - Italy - C.P.67
T. +39 045 8546201 - F. +39 045 518390

Internet: www.index-spa.com
Informazioni Tecniche Commerciali
tecom@indexspa.it
Amministrazione e Segreteria
index@indexspa.it
Index Export Dept.
index.export@indexspa.it

