



EXTRABOND

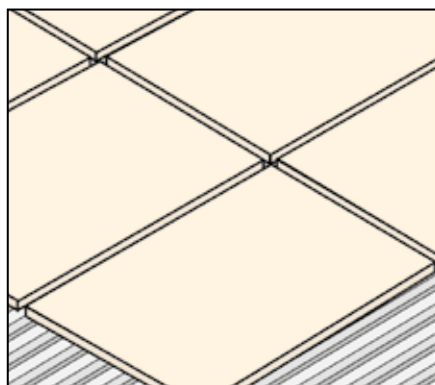
CEMENT-BASED ADHESIVE FOR THE APPLICATION OF CERAMIC TILES IN THIN COAT ON INTERNAL AND EXTERNAL FLOORS AND LINING

GRANTS *LEED* CREDITS

CHARACTERISTICS	ENVIRONMENTAL	METHOD OF USE		PRECAUTIONS
	ECO GREEN	RECYCLABLE	MIX MECHANICALLY	APPLY BY TOOTHED SPATULA
				STORAGE: IN A DRY PLACE

PROBLEM

FOR THE SETTING OF TILES UP TO 30x30 cm AND ABSORPTION OF WATER SUPERIOR TO 0,5%

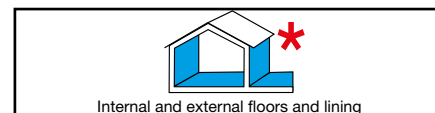


SOLUTION

EXTRABOND is a premixed powder adhesive made of cement, prime quartz sands and special additives that guarantee an excellent level of workability and adhesion to various supports. EXTRABOND is highly thixotropic and enables tiles to be applied also on upright walls without slippage.

APPLICATION FIELDS

UNIBOND is used for interior and exterior (*) bonding of ceramic tiles on the surfaces normally used in the building industry. It is used for thin-layer bonding on floors, walls and ceilings.



Internal and external floors and lining

ADVANTAGES

- Sufficient handling time to facilitate application.
- Excellent adhesion to various surfaces.
- EXTRABOND is a versatile adhesive which may be used in ordinary applications, and in more difficult cases in conjunction with ELASTOBOND.

METHOD OF USE

• PREPARAZIONE DEL SUPPORTO

The surface onto which the adhesive is applied, must be clean and free from dust, oil and form-releasing greases. For laying on gypsum, anhydrite and quick-drying screeds, insulating treatment with ISOLFIX G is required.

* EXTRABOND must be mixed with ELASTOBOND when used on exterior floors and walls, prefabricated or generally very smooth concrete surfaces, walls or floors subject to strong oscillations, heated floors or non-absorbent tiles like porcelain stoneware or clinker and large sized natural stone tiles.

• MIX PREPARATION

EXTRABOND is prepared by mixing the product with right quantity clean water (see table). Pour the powder product into the water and mix with

a drill on low speed until a uniform paste is obtained with no lumps (1). Leave the paste to rest for 3 minutes and mix again. The mix stays in workable condition for about 6 hours depending on weather conditions.

• APPLICATION

EXTRABOND is applied using a rhomboidal or square toothed trowel based on the type of tile (2). The tiles are applied by exerting sufficient pressure to ensure full contact with the adhesive.

• CONSUMPTION

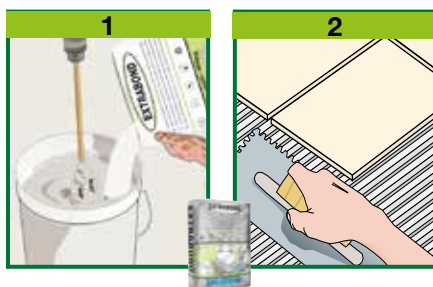
From 2 to 4 kg/m² depending on the shape and type of trowel.

• PRECAUTIONS

- Don't use on surfaces made of metal, rubber, vinyl floors, wood, linoleum or PVC.
- We suggest adding ELASTOBOND in a 1:1 ratio with the mixing water in case of laying non-absorbent tile like clinker or porcelain stoneware.
- In case of marble or composite stones particularly sensitive to water, we suggest you to consult our technical office.
- If the back of the tiles are very dusty, it is recommended to clean them by dipping them quickly in water.
- In adverse weather conditions (high tem-

peratures, wind) the normal open time may be shorter. Therefore you must make sure the adhesive has not formed a "skin" before laying the tile, which would compromise adhesion. If a "skin" has formed on the surface, simply refresh the adhesive by crossing again with the toothed trowel without wetting.

- In high temperatures wetting the foundation helps to increase the open time.
- Never use with temperatures below +5°C and high than +35°C. Protect tiles from rain, frost and high temperature for 24 hours at least.
- In hot weather avoid laying the adhesive on large surface areas.
- Glue uniformly.
- Damp surfaces can slow the setting of the product.
- Do not use for overlaying existing flooring.
- Do not use the product in thicknesses of more than 6-7 mm.
- Clean the tools with water and the covered surfaces with a damp cloth immediately after use.
- Do not expose the material to direct sunlight in hot weather.
- Store the original closed packaging in a dry place.



TECHNICAL CHARACTERISTICS

		EXTRABOND	
	Standard	Powder	
		White	Grey
Appearance			
Colour		White	Grey
Apparent density	EN 1015-6	1.30 ± 0.05 kg/L	1.30 ± 0.05 kg/L
Water ratio		28% ± 1% (7,0 L)	28% ± 1% (7,0 L)
Shelf life in original packaging (dry stored)		12 months	
Mix characteristics and workability			
Density of mix		1.60 ± 0.05 kg/L	
Mix pH		12-14	
Pot life (*)		approx 6 hours	
Application temperature		+5°C ÷ +35°C	
Open time (*)		20 minutes	
Adjustability time (*)		30 minutes	
Waiting time - before foot traffic use (*)		24 hours	
Waiting time - before grouting (*)		24 hours	
Performance characteristics	Standard	Minimum requirement	Product performance
Class and type	EN 12004		C1TE
Adhesion strength	EN 1348 P8.2	≥1.00 N/mm ²	1.0 N/mm ²
Adhesion strength - after immersion in water	EN 1348 P8.3	≥1.00 N/mm ²	0.80 N/mm ²
Adhesion strength - after heat	EN 1348 P8.4	≥1.00 N/mm ²	0.70 N/mm ²
Adhesion strength - after thaw-frost cycles	EN 1348 P8.5	≥1.00 N/mm ²	0.60 N/mm ²
Open time: adhesion strenght - after 30'	EN 1346	≥0.50 N/mm ²	0.50 N/mm ²
Sliding	EN 1308	<0,5 mm	<0.5 mm
Thermal resistance - Operating temperature			-30°C ÷ +90°C
Fire reaction	EN 13501-1		A1 CWT P4.4.2
Hazardous substances	EN 1504-3		in accordance to ZA.1 note

Test conditions: temperature 23±2°C, 50±5% R.H. and air velocity in test area <0.2 m/s. **These data may change depending on specific site conditions: temperature, ventilation, moisture and substrate absorbency.** (*) The times indicated will be longer or shorter as the temperature drops or rises.

(*) The times indicated will be longer or shorter as the temperature drops or rises.

Pursuant to European standard **EN 12004:2007+A1:2012** - General principles for the use of products and systems.

the numerous possible uses and the possible interference of conditions or elements beyond our control, we assume no responsibility regarding the results which are obtained. The purchasers, of their own accord and under their own responsibility, must establish the suitability of the product for the envisaged use.

The figures shown are average indicative figures relevant to current production and may be changed or updated by INDEX at any time without previous warning. The advice and technical information provided, is what results from our best knowledge regarding the properties and the use of the product. Considering

PACKAGING

25-kg Sacks

• FOR ANY FURTHER INFORMATION OR ADVICE ON PARTICULAR APPLICATIONS, CONTACT OUR TECHNICAL OFFICE • IN ORDER TO CORRECTLY USE OUR PRODUCTS, REFER TO INDEX TECHNICAL SPECIFICATIONS •

 Construction Systems and Products Via G. Rossini, 22 - 37060 Castel D'Azzano (VR) - Italy - C.P.67 T. +39 045 8546201 - F. +39 045 518390	Internet: www.index-spa.com Informazioni Tecniche Commerciali tecom@indexspa.it Amministrazione e Segreteria index@indexspa.it Index Export Dept. index.export@indexspa.it		 UNI EN ISO 9001	 UNI EN ISO 14001	 socio del GBC Italia	
	© INDEX					