



ELASTOLIQUID T

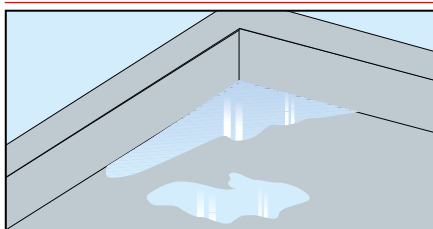
WATER-BASED, DECORATIVE, WATERPROOFING, SILOXANE, ELASTOMERIC COATING, FOR PROTECTING CONCRETE AND SPRAYED POLYURETHANE, QUICK DRYING AND HIGHLY RESISTANT TO STAGNANT WATER

GRANTS *LEED* CREDITS

| CHARACTERISTICS | | | ENVIRONMENTAL | METHOD OF USE | | | PRECAUTIONS |
|-----------------|-------------|---------------|---------------|-------------------|----------------|-----------------|-------------------------------|
| ONE-COMPONENT | WATER BASED | WATERPROOFING | ECO GREEN | SPRAY APPLICATION | APPLY BY BRUSH | APPLY BY ROLLER | STORAGE: KEEP AWAY FROM FROST |

PROBLEM

FOR PROTECTING CONCRETE AND SPRAYED POLYURETHANE



In the presence of prolonged water stagnation, traditional surface painting is subject to rapid deterioration, with loss in cohesion and film detachment. What's more, in winter or in certain environmental conditions, coatings with rapid surface drying properties are also required.

SOLUTION

ELASTOLIQUID T is a ready-to-use elastomeric, waterproofing coating based on acrylic resin in aqueous dispersion. Once dry, it forms an elastic and strong film, with very low water absorption and high adhesion to the support. It is suitable for working temperatures up to -20°C.

APPLICATION FIELDS

ELASTOLIQUID T is used to protect and decorate concrete and plastered surfaces subject to the absorption of damp and to carbonation.



Its special formulation leaves the surface efficiently transpirable.

It is ideal for protecting polyurethane foams against the deteriorating effects of U.V. rays. Thanks to its considerable elasticity, it is able to limit problems of minute cracking. It stands out from other coatings thanks to its rapid surface drying time and to its superior resistance to deterioration caused by stagnant water.

ADVANTAGES

- Superior resistance to stagnated water compared to other water-based products.
- Rapid surface drying of the film.
- It protects concrete against carbonation.
- It protects polyurethane foams against deterioration due to U.V. rays.
- It is not flammable.
- It is elastic even at low temperatures.
- Good transpiring properties.

METHOD OF USE

• SURFACE PREPARATION

Concrete surfaces must be free from scale, grout, oil, form-releasing agents, brittle parts and dust. Any holes, gaps or cavities must be repaired first with RESISTO UNIFIX mortar (1).

• APPLICATION

Lay a first coat as an insulating fixative primer, by diluting **ELASTOLIQUID T** in 10% of water (2), on the concrete surface to be waterproofed. If the concrete surfaces are particularly porous and powdery, apply PRIMER T.

ELASTOLIQUID T is applied in two coats with a 24 hour interval between one coat and the next to

allow the underlying film to dry completely.

• COVERAGE

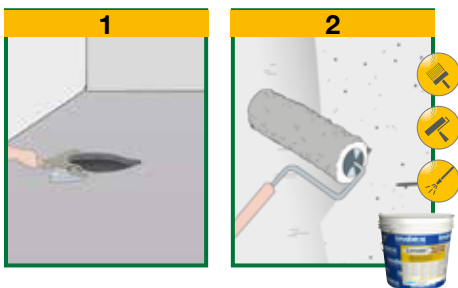
The yield depends on the porosity of the surface and is approximately 0.6-0.7 kg/m² with 2 cross-over coats.

• PRECAUTIONS

- Only apply on surfaces with good water drainage. Do not apply on surfaces subject to water stagnation.
- Not suitable for water tanks.
- Do not apply on wet or damp surfaces.
- Do not use in tanks, cellars or channels subject to strong water backflow or pressurised water.
- Do not use on surfaces or containers in contact with liquids for human consumption; drinking water or which may come into contact with solvents or mineral oils.
- Do not apply on very hot supports, as the filming process would be excessively accelerated with negative consequences regarding the adhesion of the product to the support.
- Mix the product thoroughly before use.

- Keep the containers sealed before use.

- Apply at temperatures between +5°C and +35°C. Do not apply in excessively hot or cold conditions. Do not apply when there is a risk of the temperature falling below +5°C while the painted film is drying.
- Do not apply in very damp conditions or if there is the risk of rain while the film is still drying.
- Apply a second coat of product when the first coat is perfectly dry.
- Not suitable for foot traffic. The coating can be walked for periodic maintenance purposes only.
- After use clean the tools with water and, if the product has dried, it is recommended to remove it with white spirit or hot water.
- Not frost-proof, keep at temperatures above +5 °C.



TECHNICAL CHARACTERISTICS

| | Standard | ELASTOLIQUID T |
|---|-----------------------|--|
| Appearance | | Liquid |
| Colour | | White see 'LONG LIFE COLOURS' - INDEX colour swatch |
| Density | EN 2811-1 | 1.50 ± 0.10 kg/L |
| Dry residue - at 130°C | UNI EN ISO 3251 | 70 ± 2% |
| Storage in original packaging in a dry place, away from frost | | 12 months |
| Mix properties and workability | | |
| Application thickness | | 0.4 mm (two coats) |
| Waiting time - for dust-free drying (*) | | approx 30 minutes |
| Waiting time - for applying each coat over the previous one (*) | | 24 hours |
| Application temperature | | +5°C ÷ +35°C |
| Application | | manual or spray |
| Performance characteristics | | |
| | Standard | Product performance |
| Class and type | | |
| Cold flexibility | EN 1504-2 UNI 1109 | C PI-MC-IR -20°C |
| Water vapour permeability | EN 7783-1 | Sd <5 m - class I |
| Adhesion strength | EN 1542 | ≥1.0 MPa |
| Adhesion strength - after thaw-frost cycles | EN 13687-1 | ≥0.8 MPa (no alteration) |
| Capillary water absorption | EN 1062-3 | w < 0.1 kg/m ² -h0.5 |
| CO ₂ permeability | EN 1062-6 | Sd >50 m |
| Ultimate elongation | NFT 46002 | 160 ÷ 250% |
| Adhesion strength | NFT 46002 | 1.2 ÷ 1.8 MPa |
| Crack-bridging | EN 1062-7 | > 0.5 mm - class A3 |
| Thermal resistance - Working temperature | | -30°C ÷ +90°C |
| Hazardous substances | EN 1504-2 | According note in ZA.1 |

Test conditions: temperature 23±2°C, 50±5% R.H. and air velocity in test area <0.2 m/s. These data may change depending on specific site conditions: temperature, ventilation, moisture and substrate absorbency.

(*) The times indicated will be longer or shorter as the temperature drops or rises.

Pursuant to European standard EN 1504-9 - General principles for the use of products and systems.

See LONG LIFE COLOURS colour swatch



PACKAGING

100-litres drums.
14-litres pails.

• FOR ANY FURTHER INFORMATION OR ADVICE ON PARTICULAR APPLICATIONS, CONTACT OUR TECHNICAL OFFICE • IN ORDER TO CORRECTLY USE OUR PRODUCTS, REFER TO INDEX TECHNICAL SPECIFICATIONS •

| | | | | | | |
|---|--|--|---|---|---|--|
| <p>Construction Systems and Products</p> <p>Via G. Rossini, 22 - 37060 Castel D'Azzano (VR) - Italy - C.P.67 T. +39 045 8546201 - F. +39 045 518390</p> | <p>Internet: www.index-spa.com Informazioni Tecniche Commerciali tecom@indexspa.it Amministrazione e Segreteria index@indexspa.it Index Export Dept. index.export@indexspa.it</p> | | <p>TOTAL QUALITY index</p> <p>UNI EN ISO 9001</p> | <p>Environmental Management Systems index</p> <p>UNI EN ISO 14001</p> | <p>index "GBC Italia" Associated</p> | |
| | <p>© INDEX</p> | | | | | |

the numerous possible uses and the possible interference of conditions or elements beyond our control, we assume no responsibility regarding the results which are obtained. The purchasers, of their own accord and under their own responsibility, must establish the suitability of the product for the envisaged use.

The figures shown are average indicative figures relevant to current production and may be changed or updated by INDEX at any time without previous warning. The advice and technical information provided, is what results from our best knowledge regarding the properties and the use of the product. Considering