

ELASTOLIQUID S

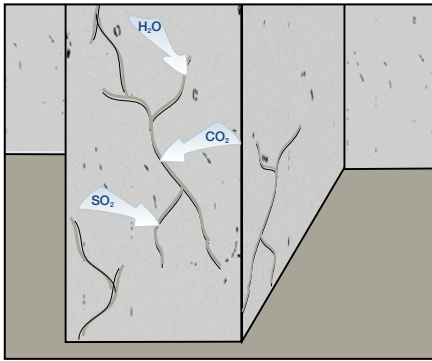
WATER BASED DECORATIVE WATERPROOFING ELASTOMERIC ANTI-CARBONATION PAINT FOR PROTECTING CONCRETE

GRANTS *LEED* CREDITS

CHARACTERISTICS			ENVIRONMENTAL	METHOD OF USE			PRECAUTIONS
ONE-COMPONENT	WATER BASED	WATERPROOFING	ECO GREEN	SPRAY APPLICATION	APPLY BY BRUSH	APPLY BY ROLLER	STORAGE: KEEP AWAY FROM FROST

PROBLEM

PROTECT CONCRETE AGAINST AGGRESSIVE AGENTS



The CO₂ present in air can cause serious problems for reinforced concrete due to carbonation which leads to a reduction in the PH value, causing it to drop below the alkaline protection threshold. The formation of rust on concrete reinforcing rods causes breakage and cracking in the concrete layer which covers the rods due to expansion (spalling). The visible rods are exposed to rapid corrosion which causes the concrete to deteriorate quickly, compromising the stability of the structure.

SOLUTION

Therefore it is necessary to efficiently waterproof and protect concrete structures from aggressive atmospheric agents with anti-carbonation paints.

ELASTOLIQUID S is an elastomeric waterproofing coating containing internally plasticised acrylic polymers. The product has a long lasting elasticity due to the lack of plasticiser migration and a higher flexibility at temperatures down to -25°C.

APPLICATION FIELDS

ELASTOLIQUID S is used to protect and decorate concrete and plaster surfaces subject to the absorption of damp and carbonation.

It is ideal for protecting polyurethane foams from the degrading effects of UV rays.

ELASTOLIQUID S is used to encapsulate the fibres of asbestos cement sheets. Thanks to its notable elasticity, it is capable of containing micro-cracking.

ELASTOLIQUID S is also used for the protection and decoration of metal decks.



ADVANTAGES

- Protects concrete from carbonation.
- Protects the surfaces from aggressive agents in the air.
- Optimal resistance to UV rays.
- Not flammable.
- Stops micro-cracking.
- Maintains its elastic properties even at low temperatures.

METHOD OF USE

• SURFACE PREPARATION

The concrete support must be free from deposits, grout, oils, release agents, loose parts and powder. Any holes, cracks or cavities must be levelled off with RESISTO UNIFIX (1) mortar prior to application; create a suitable slope for draining rainwater.

• APPLICATION

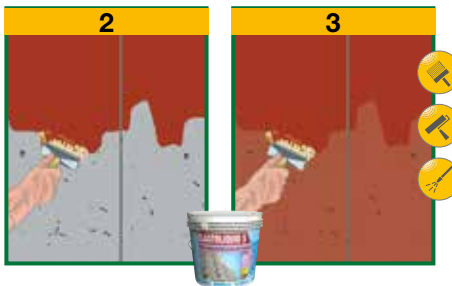
Apply a first coat of insulating fixative on the concrete surfaces to be waterproofed (2), diluting **ELASTOLIQUID S** with 30% water.

If the surfaces are



particularly porous and crumbling, use acrylic primer PRIMER FIX.

ELASTOLIQUID S should be applied in two coats (3); the second coat should be applied 24 hours after the first to allow the film to dry completely. It is advisable to always apply at least two



criss-cross coats.

• CONSUMPTION

The consumption depends on the type and porosity of the support. On smooth surfaces with average porosity a yield of 0.20 litres/m² per coat is expected (the total yield for two coats will be 0.40 litres/m²).

(See following)

TECHNICAL CHARACTERISTICS

	Standard	ELASTOLIQUID S
Appearance		Liquid
Colour		see 'LONG LIFE COLOURS' - INDEX colour swatch
Apparent density	EN 2811-1	1.40 ± 0.10 kg/L
Brookfield cup viscosity	Internal Method	20 000 ÷ 30 000 cps
Dry residue - at 130°C	UNI EN ISO 3251	68 ± 3%
Storage in original packaging in a dry place, away from frost		24 months
Mix properties and workability		
Application thickness		0.4 mm (two coats)
Waiting time - for dust-free drying (*)		approx 4 hours
Waiting time - for applying each coat over the previous one (*)		24 ore
Application temperature		+5°C ÷ +35°C
Application		manual or spray
Performance characteristics		
	Standard	Product performance
Class and type	EN 1504-2	C PI-MC-IR
Cold flexibility	UNI 1109	-25°C
Water vapour permeability	EN 7783-1	Sd <5 m - class I
Adhesion strength	EN 1542	≥1.0 MPa
Adhesion strength - after thaw-frost cycles	EN 13687-1	≥0.8 MPa (no alteration)
Capillary water absorption	EN 1062-3	w < 0.1 kg/m ² ·h ^{0.5}
CO₂ permeability	EN 1062-6	Sd >50 m
Ultimate elongation	NFT 46002	160 ÷ 250%
Adhesion strength	NFT 46002	1.2 ÷ 1.8 MPa
Crack-bridging	EN 1062-7	> 0.5 mm - class A3
Thermal resistance - Working temperature		-30°C ÷ +90°C
Hazardous substances	EN 1504-2	According note in ZA.1

Test conditions: temperature 23±2°C, 50±5% R.H. and air velocity in test area <0.2 m/s. **These data may change depending on specific site conditions: temperature, ventilation, moisture and substrate absorbency.**

(*) The times indicated will be longer or shorter as the temperature drops or rises.

Pursuant to European standard EN 1504-9 - General principles for the use of products and systems.

(See previous)

• PRECAUTIONS

- Only apply on surfaces with good water drainage. Do not apply on surfaces subject to water stagnation.
- Not suitable for water tanks.
- Do not apply on wet or damp surfaces.
- Do not use in tanks, cellars or channels subject to strong water backflow or pressurised water.
- Do not use on surfaces or containers in contact with liquids for human consumption; drinking water or which may come into contact with solvents or mineral oils.
- Do not apply on very hot supports, as the film-forming process would be excessively accelerated with negative consequences regarding the adhesion of the product to the support.
- Mix the product thoroughly before use.

- Keep the containers sealed before use.
- Apply at temperatures between +5°C and +35°C. Do not apply in excessively hot or cold conditions. Do not apply when there is a risk of the temperature falling below +5°C while the painted film is drying. Do not apply on very hot surfaces because the film-forming process would be accelerated excessively with negative consequences on the product's cohesion and bonding to the surface.
- Do not apply in very damp conditions or if there is the risk of rain while the film is still drying.
- Apply a second coat of product when the first coat is perfectly dry.
- Not suitable for foot traffic. The coating can be walked for periodic maintenance purposes only.

- After use clean the tools with water and, if the product has dried, it is recommended to remove it with white spirit or hot water.
- Not frost-proof, keep at temperatures above +5 °C.

the numerous possible uses and the possible interference of conditions or elements beyond our control, we assume no responsibility regarding the results which are obtained. The purchasers, of their own accord and under their own responsibility, must establish the suitability of the product for the envisaged use.

The figures shown are average indicative figures relevant to current production and may be changed or updated by INDEX at any time without previous warning. The advice and technical information provided, is what results from our best knowledge regarding the properties and the use of the product. Considering

PACKAGING

20-liters Pail

• FOR ANY FURTHER INFORMATION OR ADVICE ON PARTICULAR APPLICATIONS, CONTACT OUR TECHNICAL OFFICE • IN ORDER TO CORRECTLY USE OUR PRODUCTS, REFER TO INDEX TECHNICAL SPECIFICATIONS •

 Construction Systems and Products Via G. Rossini, 22 - 37060 Castel D'Azzano (VR) - Italy - C.P.67 T. +39 045 8546201 - F. +39 045 518390	Internet: www.index-spa.com Informazioni Tecniche Commerciali tecom@indexspa.it Amministrazione e Segreteria index@indexspa.it Index Export Dept. index.export@indexspa.it		TOTAL QUALITY index 	Environmental Management Systems index 	 socio del GBC Italia	
			© INDEX			