

# DISARMWOOD

EMULSIFYING RELEASE AGENT FOR TREATING WOODEN FORMWORK

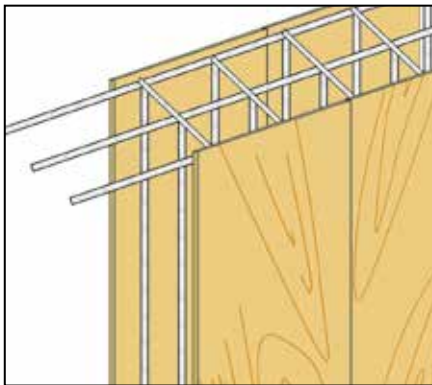


GRANTS *LEED* CREDITS

CHARACTERISTICS	ENVIRONMENTAL	METHOD OF USE				PRECAUTIONS
		MIX MECHANICALLY	SPRAY APPLICATION	APPLY BY BRUSH	APPLY BY ROLLER	STORAGE: KEEP AWAY FROM FROST

## PROBLEM

**TO AVOID ADHESION BETWEEN CONCRETE AND THE RELATING TIMBER SHUTTERING**



## SOLUTION

**DISARMWOOD** is a synthetic based formula, free from mineral oils, to be diluted with water at the time of use.

## ADVANTAGES

- Protects timber shuttering and plywood.
- Leaves concrete walls clean, without stains and with clear cut angles.
- Allows finishing work and painting on surfaces treated with release agent after simple manual brushing.
- Allows to re-use the same panels several times.
- **DISARMWOOD** is non toxic.

## APPLICATION FIELDS

**DISARMWOOD** is used for the treatment of every kind of shuttering with particular reference to rough wood (planks or plywood) and for any type of concrete including those containing white cement.

**DISARMWOOD** produces surfaces which are free from oils and grease.

## METHOD OF USE

Before use, **DISARMWOOD** release agent must be diluted in water in the following proportion, according to use: 1 part **DISARMWOOD** 5-20 parts water.

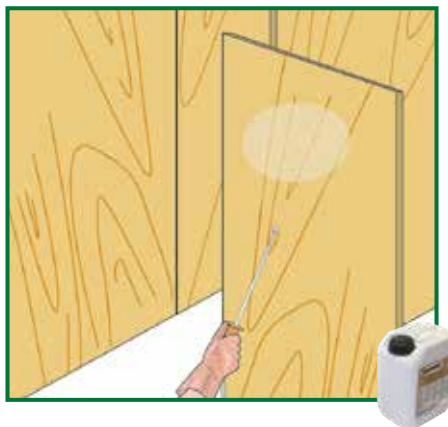
The solution obtained must be mixed carefully until a smooth mixture is achieved which is free from lumps and this should be left to rest for a few minutes.

### • APPLICATION

After a further stir, the resulting white emulsion may be applied on the timber shuttering. The emulsion may be stored for several days provided it is kept covered to avoid evaporation of the water. It is advisable to stir the emulsion before every application. Application may be carried out by brush, atomiser or a spray gun. **DISARMWOOD** produces surfaces which are free from oils and grease; mechanical brushing or sanding, before concrete finishing coat treatment, are therefore not necessary.

### • COVERAGE

1 litre of pure **DISARMWOOD**, suitably diluted with water, is sufficient to treat 100-150 m<sup>2</sup> of timber shuttering if applied by suitable atomiser. On timber shuttering: first application approximately 80 m<sup>2</sup> coverage.



### • PRECAUTIONS

- **DISARMWOOD** must be applied on clean surfaces not contaminated by greasy products.
- If, once applied, the product forms small droplets, it means that the surface to be treated is not thoroughly clean.
- It is necessary to remove any excess **DISARMWOOD** deposited on the moulds.
- The emulsified product is damaged by frost.
- Keep away from sun.

## TECHNICAL CHARACTERISTICS

	Standard	DISARMWOOD
Appearance		oily liquid
Colour		Dark
Density	EN 2811-1	0.88 ± 0.02 kg/L
Storage in original packaging in a dry place, away from frost		24 months

The numerous possible uses and the possible interference of conditions or elements beyond our control, we assume no responsibility regarding the results which are obtained. The purchasers, of their own accord and under their own responsibility, must establish the suitability of the product for the envisaged use.

The figures shown are average indicative figures relevant to current production and may be changed or updated by INDEX at any time without previous warning. The advice and technical information provided, is what results from our best knowledge regarding the properties and the use of the product. Considering

## PACKAGING

200-litres drums.  
20-litres pails.  
5-litres pails.

• FOR ANY FURTHER INFORMATION OR ADVICE ON PARTICULAR APPLICATIONS, CONTACT OUR TECHNICAL OFFICE • IN ORDER TO CORRECTLY USE OUR PRODUCTS, REFER TO INDEX TECHNICAL SPECIFICATIONS •

 <p><b>index</b> Construction Systems and Products</p> <p>Via G. Rossini, 22 - 37060 Castel D'Azzano (VR) - Italy - C.P.67 T. +39 045 8546201 - F. +39 045 518390</p>	<p>Internet: <a href="http://www.index-spa.com">www.index-spa.com</a> Informazioni Tecniche Commerciali <a href="mailto:tecom@indexspa.it">tecom@indexspa.it</a> Amministrazione e Segreteria <a href="mailto:index@indexspa.it">index@indexspa.it</a> Index Export Dept. <a href="mailto:index.export@indexspa.it">index.export@indexspa.it</a></p>		<p>TOTAL QUALITY <b>index</b></p>  <p>UNI EN ISO <b>9001</b></p>	<p>Environmental Management Systems <b>index</b></p>  <p>UNI EN ISO <b>14001</b></p>	 <p><b>index</b> "GBC Italia" Associated</p>	 <p><b>lavorosicuro</b></p>
--	--	---	--	---	---	--