








DISARMFER

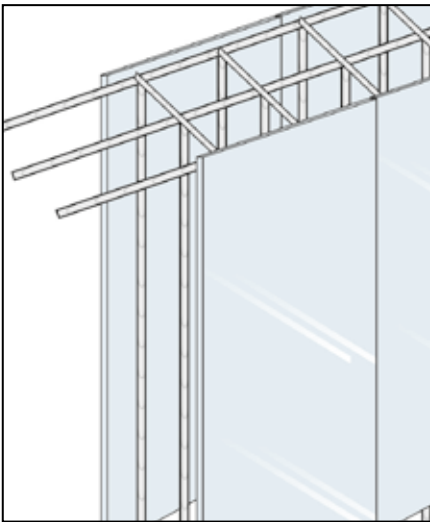
UNIVERSAL RELEASE AGENT FOR WOOD AND IRON

GRANTS *LEED* CREDITS

CHARACTERISTICS	ENVIRONMENTAL	METHOD OF USE			PRECAUTIONS	
		 MIX MECHANICALLY	 SPRAY APPLICATION	 APPLY BY BRUSH	 APPLY BY ROLLER	 STORAGE: KEEP AWAY FROM FROST

PROBLEM

EASILY RELEASE THE PANELS OF FORMWORKS FOR CONCRETE



SOLUTION

An efficient release agent is required to prevent adhesion between the concrete and the timber or steel shuttering.

DISARMFER is a synthetic based for-mula which is free from mineral oils and ready to use. It isolates the shut-tering from the casting by means of a traditional type physical release action and also reacts chemically with the cement paste of the concrete, crea-ting a further insulating element in the form of a very fine cohesion free film which allows an easy separation of the two elements.

ADVANTAGES

- Allows to have a uniform appearance without staining and all angles and corners will be sharp and clear cut.
- It is non toxic and does not contain mineral oils.
- Easy and fast formwork maintenance.
- Allows finishing work and painting on surfaces treated with release agent with simple manual brushing.
- Allows the same panels to be used many times.

APPLICATION FIELDS

DISARMFER is suitable for use with every type of concrete, metal, timber shuttering or plastic materials (epoxy and phenolic resins, polyester, polyu-rethane).

It is recommended in all ca-ses where difficulty occurs with cold or warm shuttering, warm concrete, complex shape or white cements. It is also suitable for concrete castings matured by steam or normal process.

DISARMFER is particularly suitable for prefabricated concrete and also when white cement is used.

METHOD OF USE

• APPLICATION

DISARMFER is applied on the shuttering in a very thin layer using spraying apparatus or a lightly saturated pad. **DISARMFER** release agent protects the finished concrete surface from oil or grease.

DISARMFER produces surfaces which are free from oils and grease.

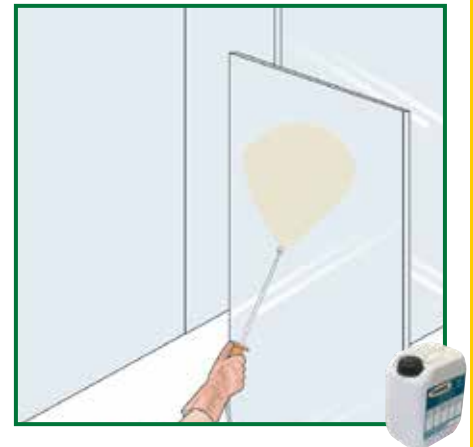
• COVERAGE

With 1 litre of **DISARMFER** you can treat on average:

- metal shuttering: 40-50 m²
- timber shuttering: 25-35 m²
- plastic shuttering: 40-50 m²
- plaster or cement shuttering: 5-10 m², for subsequent applications 15-20 m².

• PRECAUTIONS

- Avoid applying the product in quan-tities greater than indicated so as not to reduce the release qualities of **DISARMFER** or af-fect the final ap-pearance of the concrete surface.
- Dry any excesses of **DISARMFER** deposited in corners and on the si-des of the shuttering.
- Protect the product from the sun.



TECHNICAL CHARACTERISTICS

	Standard	DISARMFER
Appearance		oily liquid
Colour		Dark brown
Density	EN 2811-1	0.90 ± 0.02 kg/L
Storage in original packaging in a dry place, away from frost		24 months

the numerous possible uses and the possible interference of conditions or elements beyond our control, we assume no responsibility regarding the results which are obtained. The purchasers, of their own accord and under their own responsibility, must establish the suitability of the product for the envisaged use.

The figures shown are average indicative figures relevant to current production and may be changed or updated by INDEX at any time without previous warning. The advice and technical information provided, is what results from our best knowledge regarding the properties and the use of the product. Considering

PACKAGING

200-litres drums.
20-litres pails.
5-litres pails.

• FOR ANY FURTHER INFORMATION OR ADVICE ON PARTICULAR APPLICATIONS, CONTACT OUR TECHNICAL OFFICE • IN ORDER TO CORRECTLY USE OUR PRODUCTS, REFER TO INDEX TECHNICAL SPECIFICATIONS •

 <p>index Construction Systems and Products</p> <p>Via G. Rossini, 22 - 37060 Castel D'Azzano (VR) - Italy - C.P.67 T. +39 045 8546201 - F. +39 045 518390</p>	<p>Internet: www.index-spa.com Informazioni Tecniche Commerciali tecom@indexspa.it Amministrazione e Segreteria index@indexspa.it Index Export Dept. index.export@indexspa.it</p>		<p>TOTAL QUALITY index</p>  <p>UNI EN ISO 9001</p>	<p>Environmental Management Systems index</p>  <p>UNI EN ISO 14001</p>	 <p>index "GBC Italia" Associated</p>	 <p>lavorosicuro</p>
--	--	---	--	---	---	--