

# BioFONDICAL

LIME-BASED GRIPPING RENDER  
FOR IMPROVED PLASTER ADHESION,  
FOR EXTERIOR AND INTERIOR APPLICATION

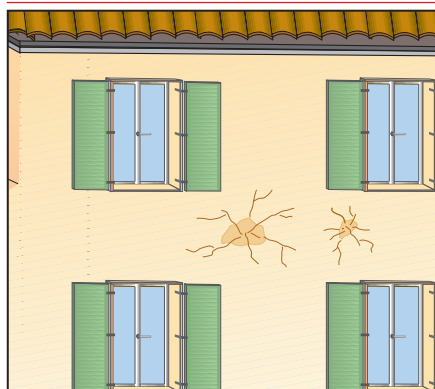
GRANTS *LEED* CREDITS



CHARACTERISTICS	ENVIRONMENTAL		METHOD OF USE		PRECAUTIONS
 ALLOWS TO BREATHE	 ECO GREEN	 RECYCLABLE	 MIX MECHANICALLY	 APPLY BY TROWEL	 STORAGE: IN A DRY PLACE

## PROBLEM

**INCREASING THE GRIP OF PLASTERS TO THE SUBSTRATE**



## SOLUTION

**BioFONDICAL** is a premixed render in powder form, based on hydraulic lime and selected aggregates.



## APPLICATION FIELDS

**BioFONDICAL** is designed to improve the grip of any type of plaster on conventional building substrates: brick, stone, tuff, cellular concrete and mixed masonry.

## ADVANTAGES

- Easy to apply.
- Excellent breathability.
- Excellent resistance to frost/thaw cycles.
- Natural composition ideally suited for renovating/conserving historic buildings.

## METHOD OF USE

### • PREPARING THE SUBSTRATE

The substrate must be free from dust, dirt, flaking parts, release agents etc..

### • PREPARING THE MIX

The mix should be made to a semi-plastic consistency (4.5-5 litres of clean water per 25 kg bag).

### • APPLICATION

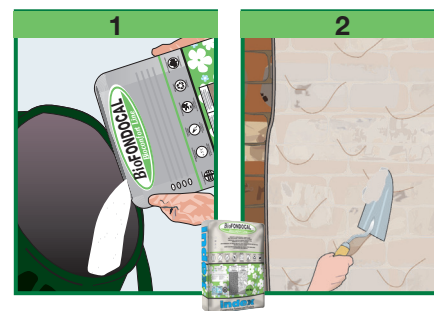
Apply with a trowel, having first dampened the surface. Plaster after approximately 24 hours, or in any case the next day.

### • COVERAGE

7 kg/m<sup>2</sup>×0.5 cm.

### • WARNINGS

- Use cold water in the summer and water at 20°C in the winter.
- Application temperature from +5°C to +35°C.
- Do not add other materials such as bonding agents, aggregates or additives.
- In hot weather, keep the surface of the laid mortar wet, preventing the product from drying out quickly, for at least 8 hours.
- Wet the surfaces in high temperatures.
- Do not add water when the mix starts to set.
- Avoid sudden temperature changes while the plaster is setting.
- Store in original closed packaging in a dry place. Protect against frost and high temperatures.



Renders and plaster

B

## TECHNICAL CHARACTERISTICS

	Standard	<b>BioFONDOCAL</b>
Appearance		Powder
Colour		Whitish
Particle size		0 ÷ 1.6 mm
Apparent density		1.55 ± 0.05 kg/litre
Mixing water		18% ± 1%
Storage in original packaging in a dry place		12 months
<b>Mix properties and workability</b>	<b>Standards</b>	
Density of the mix	<b>EN 1015-6</b>	1.85 ± 0.05 kg/litre
Application temperature		+5°C to +35°C
Minimum application thickness		3.0 mm
Maximum application thickness per layer		10.0 mm
Application		Manual
<b>Performance characteristics</b>	<b>Standards</b>	<b>Product performance</b>
<b>Class and type</b>	<b>EN 998-1</b>	<b>GP</b>
<b>Resistance to compression - after 28 days</b>	<b>EN 1015-11</b>	≥7 N/mm <sup>2</sup> - CS III
Resistance to bending - after 28 days	<b>EN 1015-11</b>	2.5 N/mm <sup>2</sup>
<b>Adhesion to substrate</b>	<b>EN 1015-12</b>	≥0.5 N/mm <sup>2</sup> - FP: A
<b>Water absorption through capillarity</b>	<b>EN 1015-18</b>	W0
<b>Water vapour permeability coefficient</b>	<b>EN 1015-19</b>	μ = 20
<b>Thermal conductivity</b> λ <sub>10,dry</sub>	<b>EN 1745 A.12</b>	0.76 W/mK
<b>Durability</b>	<b>EN 998-1</b>	5.2.3.2 compliant
Thermal resistance - Working temperature		-30°C to +90°C
<b>Reaction to fire</b>	<b>EN 13501-1</b>	A1
<b>Hazardous substances</b>	<b>EN 998-1</b>	According note in ZA.1

Test conditions: temperature 23±2°C, R.H. 50±5% and air speed in the test area <0.2 m/s. **These figures may vary depending on the specific conditions of the worksite: temperature, humidity, ventilation, absorbency of the base coat.**

(\*) The stated times may be longer or shorter as the temperature decreases or increases.

Compliant with the general principles defined in **EN 998-1** - Principles for evaluation of the use of products and systems.

the numerous possible uses and the possible interference of conditions or elements beyond our control, we assume no responsibility regarding the results which are obtained. The purchasers, of their own accord and under their own responsibility, must establish the suitability of the product for the envisaged use.

The figures shown are average indicative figures relevant to current production and may be changed or updated by INDEX at any time without previous warning. The advice and technical information provided, is what results from our best knowledge regarding the properties and the use of the product. Considering

## PACKAGING

**BioFONDOCAL**  
25-kg Sack

• FOR ANY FURTHER INFORMATION OR ADVICE ON PARTICULAR APPLICATIONS, CONTACT OUR TECHNICAL OFFICE • IN ORDER TO CORRECTLY USE OUR PRODUCTS, REFER TO INDEX TECHNICAL SPECIFICATIONS •

 <b>Construction Systems and Products</b> Via G. Rossini, 22 - 37060 Castel D'Azzano (VR) - Italy - C.P.67 T. +39 045 8546201 - F. +39 045 518390	Internet: <a href="http://www.index-spa.com">www.index-spa.com</a> Informazioni Tecniche Commerciali <a href="mailto:tecom@indexspa.it">tecom@indexspa.it</a> Amministrazione e Segreteria <a href="mailto:index@indexspa.it">index@indexspa.it</a> Index Export Dept. <a href="mailto:index.export@indexspa.it">index.export@indexspa.it</a>		 UNI EN ISO <b>9001</b>	 UNI EN ISO <b>14001</b>	 index socio del GBC Italia	
---	---	---	---	---	--	---