



SILENTGipsalu SILENTGips

THERMAL-ACOUSTIC INSULATION MADE OF PLASTERBOARD PANELS PRE-COUPLED WITH GLASS WOOL FOR INSULATING FALSE-WALLS GLUED TO EXTERNAL PERIMETER WALLS AND INTERNAL DIVIDING WALLS

GRANTS *LEED* CREDITS

CHARACTERISTICS		ENVIRONMENTAL		
ACOUSTIC INSULATION	THERMAL INSULATION	ECO GREEN	RECYCLABLE	SAFE WASTE

APPLICATION FIELDS

The **SILENTGips** panels are used in the building trade mainly to acoustically insulate internal walls and, considering the thermal insulation property of the glass wool, they are also used to insulate perimeter walls facing the exterior that need to be acoustically and thermally insulated.

panels are to be glued to the wall keeping them separate from the floor, by fitting them on wedges, which will be removed after the glue has set. The space between the wall and the floor can then be filled with a strip of extruded polyethylene or glass fibre felt and then the skirting board can be installed. The surface of the panel substitutes plastering and can be painted over directly.

1 PROBLEM

There is quite often very little space available to insulate an existent wall.

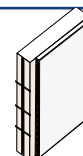
2 SOLUTION

SILENTGips and **SILENTGipsalu** are prefabricated panels used to create false-walls in walls that need additional thermal-acoustic insulation. They consist of 9.5-mm thick plasterboard panels coupled with a panel of glass fibre with density of 85 Kg/m³, produced in various thicknesses, chosen based on the insulation requirements. **SILENTGipsalu** has a metal vapour barrier in aluminium foil inserted between the panel and the mineral wool to prevent the water vapour from condensing in the insulation layer. Once fitted, the panels do not need to be plastered and create a finished wall ready to be painted or covered.

METHOD OF USE

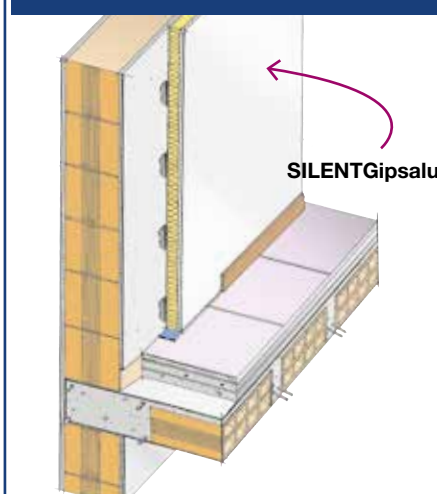
The panels are generally glued to the wall with the special GIPSCOLL adhesive, applied in dabs and the joints between the panels are appropriately sealed with NASTROGIPS and grouted with STUCCOJOINT, both plaster-based.

To ensure efficient acoustic insulation, the

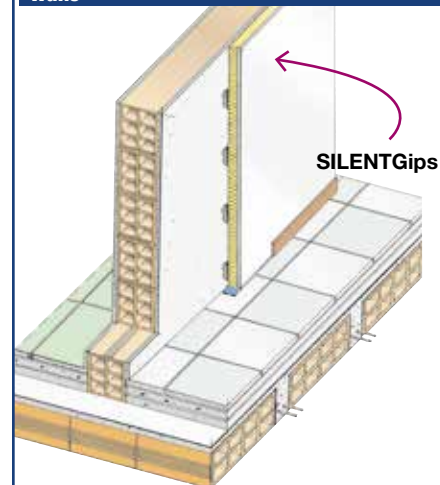


Thermal and acoustic insulation of walls with lightweight glued false walls against airborne noise – page 85

Thermal-acoustic insulation of outer walls



Thermal-acoustic insulation of indoors walls



2nd DIVISION
2nd LINE



5th DIVISION
2nd LINE

SILENTGips

Type		SILENTGipsalu		SILENTGips		
Thickness		32.5 mm	42.5 mm	32.5 mm	42.5 mm	52.5 mm
• glass wool		20.0 mm	30.0 mm	20.0 mm	30.0 mm	40.0 mm
• plasterboard		12.5 mm	12.5 mm	12.5 mm	12.5 mm	12.5 mm
• aluminium foil		15 µm	15 µm	–	–	–
Dimension		1.2x3.0 m	1.2x3.0 m	1.2x3.0 m	1.2x3.0 m	1.2x3.0 m
Density (tolerance –10%)		10.7 kg/m ²	11.5 kg/m ²	10.7 kg/m ²	11.5 kg/m ²	12.4 kg/m ²
Thermal conductivity λ		0.046 W/mK	0.042 W/mK	0.046 W/mK	0.042 W/mK	0.038 W/mK
Thermal resistance R	EN 12667	0.65 m ² K/W	0.95 m ² K/W	0.65 m ² K/W	0.95 m ² K/W	1.30 m ² K/W
Aqueous vapour diffusion coefficient		µ 85 000	µ 85 000	µ =10	µ =10	µ =10
Dynamic stiffness	UNI EN 29052/1	s' = 2 MN/m ³				
Specific heat:						
• glass wool		0.850 KJ/kgK				
• plasterboard		0.837 KJ/kgK				
Bending strength	EN 520	550/210 N				
Fire reaction classification	EN 13501-1	Class F				

the numerous possible uses and the possible interference of conditions or elements beyond our control, we assume no responsibility regarding the results which are obtained. The purchasers, of their own accord and under their own responsibility, must establish the suitability of the product for the envisaged use.

The figures shown are average indicative figures relevant to current production and may be changed or updated by INDEX at any time without previous warning. The advice and technical information provided, is what results from our best knowledge regarding the properties and the use of the product. Considering

• THE TECHNICAL SPECIFICATIONS MAY BE VIEWED AND DOWNLOADED ON THE RELEVANT PRODUCT DATA SHEET AT www.indexspa.it •

• FOR THE CORRECT USE OF OUR PRODUCTS, CONSULT INDEX TECHNICAL SPECIFICATIONS • FOR FURTHER INFORMATION OR SPECIAL USES, CONSULT OUR TECHNICAL OFFICE •

 <p>Construction Systems and Products</p> <p>Via G. Rossini, 22 - 37060 Castel D'Azzano (VR) - Italy - C.P.67 T. +39 045 8546201 - F. +39 045 518390</p>	<p>Internet: www.index-spa.com</p> <p>Informazioni Tecniche Commerciali tecom@indexspa.it</p> <p>Amministrazione e Segreteria index@indexspa.it</p> <p>Index Export Dept. index.export@indexspa.it</p>		<p>TOTAL QUALITY index</p>  <p>UNI EN ISO 9001</p>	<p>Environmental Management Systems index</p>  <p>UNI EN ISO 14001</p>	 <p>index "GBC Italia" Associated</p>	 <p>Associated ANIT</p>
---	---	---	---	--	--	--